

Human SCGN / Secretagogen Protein (His Tag)

Catalog Number: 12411-H07E



Sino Biological
Biological Solution Specialist

General Information

Gene Name Synonym:

CALBL; DJ501N12.8; SECRET; SEGN; setagin

Protein Construction:

A DNA sequence encoding the human SCGN (NP_008929.2) (Asp 2-Pro 276) was expressed, with a polyhistidine tag at the N-terminus.

Source: Human

Expression Host: E. coli

QC Testing

Purity: > 97 % as determined by SDS-PAGE

Endotoxin:

Please contact us for more information.

Stability:

Samples are stable for up to twelve months from date of receipt at -70 °C

Predicted N terminal: Met

Molecular Mass:

The recombinant human SCGN consisting of 286 amino acids and has a calculated molecular mass of 33.4 kDa. It migrates as an approximately 32 kDa band in SDS-PAGE under reducing conditions.

Formulation:

Lyophilized from sterile PBS, pH 7.4

Normally 5 % - 8 % trehalose, mannitol and 0.01% Tween80 are added as protectants before lyophilization. Specific concentrations are included in the hardcopy of COA. Please contact us for any concerns or special requirements.

Usage Guide

Storage:

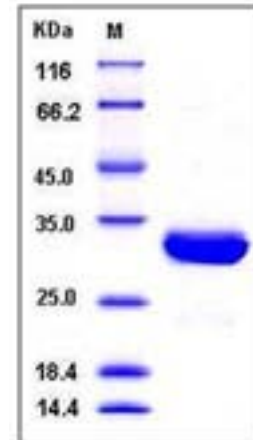
Store it under sterile conditions at -20°C to -80°C upon receiving. Recommend to aliquot the protein into smaller quantities for optimal storage.

Avoid repeated freeze-thaw cycles.

Reconstitution:

Detailed reconstitution instructions are sent along with the products.

SDS-PAGE:



Protein Description

Secretagogen, also known as SCGN, is a secreted protein which is detectable in human serum after ischemic neuronal damage. It is a recently described calcium-binding protein. Secretagogen / SCGN is expressed at high levels in the pancreatic islets of Langerhans and to a much lesser extent in the gastrointestinal tract (stomach, small intestine and colon), the adrenal medulla and cortex and the thyroid C-cells. In the brain, the expression of Secretagogen / SCGN is restricted to distinct subtypes of neurons with highest expression in the molecular layer of the cerebellum (stellate and basket cells), in the anterior part of the pituitary gland, in the thalamus, in the hypothalamus and in a subgroup of neocortical neurons. Secretagogen / SCGN is widely expressed in prostatic adenocarcinoma as opposed to adenocarcinomas in other organs. The function of Secretagogen / SCGN is unknown, but it has been suggested in beta-cells to influence calcium-influx and has been observed downregulated in diabetes-prone BB rat islets exposed to cytokines. Secretagogen / SCGN is involved in the calcium metabolism of tumour cells and endothelial cells in a subset of neoplasms of the brain and its coverings. Secretagogen / SCGN is also a novel marker for neuroendocrine differentiation.

References

1. Birkenkamp-D, K. et al., 2005, Neuroendocrinology. 82 (2):121-38.
2. Skovhus, K.V. et al., 2006, Scand J Immunol. 64 (6):639-45.
3. Pipp, I. et al., 2007, APMIS. 115 (4):319-26.

Manufactured By Sino Biological Inc., FOR RESEARCH USE ONLY. NOT FOR USE IN HUMANS.

For US Customer: Fax: 267-657-0217 • Tel: 215-583-7898

Global Customer: Fax :+86-10-5862-8288 • Tel:+86-400-890-9989 • <http://www.sinobiological.com>