

# Human SerpinB1 / ELANH2 Protein (His Tag)



Sino Biological  
Biological Solution Specialist

Catalog Number: 12588-H08B

## General Information

### Gene Name Synonym:

EL; ELANH2; HEL-S-27; HEL57; LEI; M/NEI; MNEI; PI-2; PI2

### Protein Construction:

A DNA sequence encoding the human SERPINB1 (P30740) (Met 1-Pro 379) was fused with a polyhistidine tag at the C-terminus.

**Source:** Human

**Expression Host:** Baculovirus-Insect Cells

## QC Testing

**Purity:** > 90 % as determined by SDS-PAGE

### Endotoxin:

< 1.0 EU per µg of the protein as determined by the LAL method

### Stability:

Samples are stable for up to twelve months from date of receipt at -70 °C

**Predicted N terminal:** Met 1

### Molecular Mass:

The recombinant human SERPINB1 consists of 390 amino acids and migrates as an approximately 44 kDa band as predicted in SDS-PAGE under reducing conditions.

### Formulation:

Lyophilized from sterile 20mM Tris, 500mM NaCl, pH 8.0, 10% gly

Normally 5 % - 8 % trehalose, mannitol and 0.01% Tween80 are added as protectants before lyophilization. Specific concentrations are included in the hardcopy of COA. Please contact us for any concerns or special requirements.

## Usage Guide

### Storage:

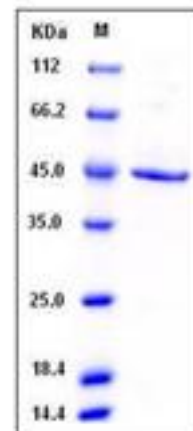
Store it under sterile conditions at -20°C to -80°C upon receiving. Recommend to aliquot the protein into smaller quantities for optimal storage.

**Avoid repeated freeze-thaw cycles.**

### Reconstitution:

Detailed reconstitution instructions are sent along with the products.

## SDS-PAGE:



Manufactured By Sino Biological Inc., FOR RESEARCH USE ONLY. NOT FOR USE IN HUMANS.

For US Customer: Fax: 267-657-0217 • Tel: 215-583-7898

Global Customer: Fax :+86-10-5862-8288 • Tel:+86-400-890-9989 • <http://www.sinobiological.com>