

# Human S100P / S100E Protein



Sino Biological  
Biological Solution Specialist

Catalog Number: 12635-HNAE

## General Information

### Gene Name Synonym:

MIG9

### Protein Construction:

A DNA sequence encoding the mature form of human S100P (P25815) (Met 1-Lys 95) was expressed and purified.

**Source:** Human

**Expression Host:** E. coli

## QC Testing

**Purity:** > 97 % as determined by SDS-PAGE

### Endotoxin:

Please contact us for more information.

### Stability:

Samples are stable for up to twelve months from date of receipt at -70 °C

**Predicted N terminal:** Met 1

### Molecular Mass:

The recombinant human S100P consisting of 95 amino acids and has a calculated molecular mass of 10.4 kDa.

### Formulation:

Lyophilized from sterile PBS, pH 7.5

Normally 5 % - 8 % trehalose, mannitol and 0.01% Tween80 are added as protectants before lyophilization. Specific concentrations are included in the hardcopy of COA. Please contact us for any concerns or special requirements.

## Usage Guide

### Storage:

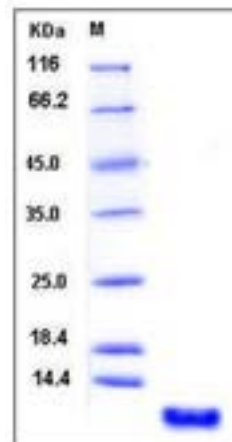
Store it under sterile conditions at -20°C to -80°C upon receiving. Recommend to aliquot the protein into smaller quantities for optimal storage.

**Avoid repeated freeze-thaw cycles.**

### Reconstitution:

Detailed reconstitution instructions are sent along with the products.

## SDS-PAGE:



## Protein Description

Protein S100-P, also known as Protein S100-E, S100 calcium-binding protein P, S100P and S100E, is a nucleus and cytoplasm protein which belongs to the S-100 family. S100P / S100E contains two EF-hand domains. S100P protein regulates calcium signal transduction and mediates cytoskeletal interaction, protein phosphorylation and transcriptional control. S100P / S100E overexpression can upregulate androgen receptor expression and thereby promote prostate cancer progression by increasing cell growth. S100P / S100E may directly confer resistance to chemotherapy. S100P / S100E induction may be considered an important step in the initial stage of lung adenocarcinomas, whereas its downregulation in advanced stages seems to be important for tumour progression in which DNA methylation and/or feedback transcription processes play a critical role. S100P / S100E plays a major role in the aggressiveness of pancreatic cancer that is likely mediated by its ability to activate RAGE. Interference with S100P / S100E may provide a novel approach for treatment of pancreatic cancer. S100P / S100E could be considered a potential drug target or a chemosensitization target, and could also serve as a biomarker for aggressive, hormone-refractory and metastatic prostate cancer.

## References

- 1.Arumugam,T. et al., 2005, Clin Cancer Res. 11 (15): 5356-64.
- 2.Basu,G.D. et al., 2008, Int J Cancer. 123 (2): 330-9.
- 3.Rehbein,G. et al., 2008,Int J Mol Med. 22 (1): 69-77.

Manufactured By Sino Biological Inc., FOR RESEARCH USE ONLY. NOT FOR USE IN HUMANS.

For US Customer: Fax: 267-657-0217

● Tel: 215-583-7898

Global Customer: Fax :+86-10-5862-8288

● Tel:+86-400-890-9989

● <http://www.sinobiological.com>