

Human SerpinB6 / PI-6 Protein (His Tag)



Sino Biological
Biological Solution Specialist

Catalog Number: 12837-H07B

General Information

Gene Name Synonym:

CAP; DFNB91; DKFZp686I04222; MGC111370; MSTP057; PI-6; PI6; PTI; RP1-90J20.6; SPI3

Protein Construction:

A DNA sequence encoding the human SERPINB6 (AAB30320.1) (Asp 2-Pro 376) was expressed, with a polyhistidine tag at the N-terminus.

Source: Human

Expression Host: Baculovirus-Insect Cells

QC Testing

Purity: > 90 % as determined by SDS-PAGE

Endotoxin:

< 1.0 EU per µg of the protein as determined by the LAL method

Stability:

Samples are stable for up to twelve months from date of receipt at -70 °C

Predicted N terminal: Met

Molecular Mass:

The recombinant human SERPINB6 consists of 394 amino acids and predicts a molecular mass of 44.9 kDa. It migrates as an approximately 43 kDa band in SDS-PAGE under reducing conditions.

Formulation:

Lyophilized from sterile PBS, pH 7.4

Normally 5 % - 8 % trehalose, mannitol and 0.01% Tween80 are added as protectants before lyophilization. Specific concentrations are included in the hardcopy of COA. Please contact us for any concerns or special requirements.

Usage Guide

Storage:

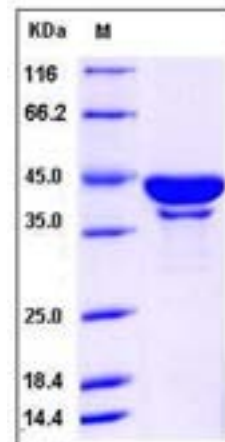
Store it under sterile conditions at -20°C to -80°C upon receiving. Recommend to aliquot the protein into smaller quantities for optimal storage.

Avoid repeated freeze-thaw cycles.

Reconstitution:

Detailed reconstitution instructions are sent along with the products.

SDS-PAGE:



Protein Description

SerpinB6, also known as Cytoplasmic antiproteinase, Peptidase inhibitor 6, Placental thrombin inhibitor, SERPINB6 and PI-6, is a cytoplasm protein which belongs to theserpin family and Ov-serpin subfamily. SerpinB6 / PI-6 is an inhibitor of cathepsin G, kallikrein-8 and thrombin. It may play an important role in the inner ear in the protection against leakage of lysosomal content during stress and loss of this protection results in cell death and sensorineural hearing loss. SerpinB6 / PI-6 is expressed in keratinocytes (at protein level). It is also found in placenta, cardiac muscle, lung, liver, kidney and pancreas. SerpinB6 / PI-6 is expressed in the inner ear hair cells. It expressed abundantly by normal mast cells in different tissues and by mast cells in mastocytoma lesions. SerpinB6 / PI-6 may be involved in the regulation of serine proteinases present in the brain or extravasated from the blood. Defects in SerpinB6 are the cause of deafness autosomal recessive type 91 which is a form of non-syndromic deafness characterized by progressive and age-dependent sensorineural hearing loss. Vestibular function is normal.

References

1.Morgenstern KA. et al.,1994, Biochemistry. 33: 3432-41. 2.Strik MC. et al., 2004, Blood. 103: 2710-7. 3.Scott FL. et al., 2007, J Biochem. 142: 435-42.

Manufactured By Sino Biological Inc., FOR RESEARCH USE ONLY. NOT FOR USE IN HUMANS.

For US Customer: Fax: 267-657-0217 • Tel: 215-583-7898

Global Customer: Fax :+86-10-5862-8288 • Tel:+86-400-890-9989 • <http://www.sinobiological.com>