

CRADD/RAIDD Antibody, Rabbit PAb, Antigen Affinity Purified



Sino Biological
Biological Solution Specialist

Catalog Number: 12900-T62

GENERAL INFORMATION

Immunogen:	Recombinant Human CRADD/RAIDD Protein (Catalog#12900-H08E)
Preparation	Produced in rabbits immunized with purified, recombinant Human CRADD/RAIDD (rh CRADD/RAIDD; Catalog#12900-H08E; P78560; Met1-Glu199). CRADD/RAIDD specific IgG was purified by Human CRADD/RAIDD affinity chromatography.
Ig Type:	Rabbit IgG
Specificity:	Human CRADD/RAIDD
Formulation:	0.2 µm filtered solution in PBS
Storage:	This antibody can be stored at 2°C-8°C for one month without detectable loss of activity. Antibody products are stable for twelve months from date of receipt when stored at -20°C to -80°C. Preservative-Free. Avoid repeated freeze-thaw cycles.
Alternative Names:	MRT34,RAIDD

APPLICATIONS

Applications:	WB,ELISA,IHC-P,ICC/IF,IP
----------------------	--------------------------

RECOMMENDED CONCENTRATION

IHC-P	IHC-P: 1:2500-1:10000
ICC/IF	ICC/IF: 1:1500-1:50000
Western Blot	WB: 1:500-1:1000
Immunoprecipitation	IP: 0.2-1 µL/mg of lysate
ELISA	ELISA: 1:25000-1:50000 This antibody can be used at 1:25000-1:50000 with the appropriate secondary reagents to detect Human CRADD/RAIDD.

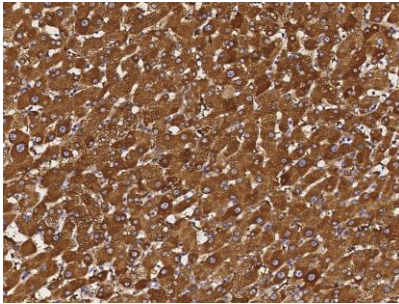
Please Note: Optimal concentrations/dilutions should be determined by the end user.

CRADD/RAIDD Antibody, Rabbit PAb, Antigen Affinity Purified

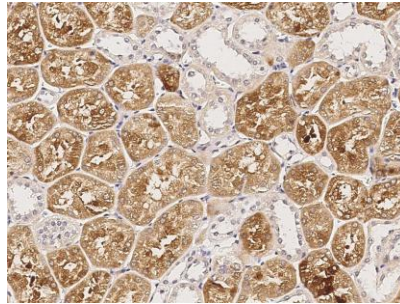


Sino Biological
Biological Solution Specialist

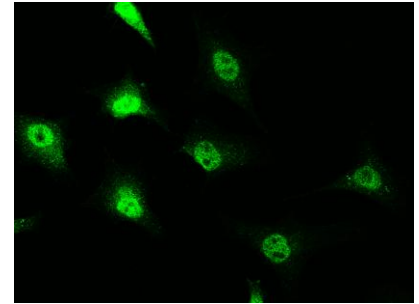
Catalog Number: 12900-T62



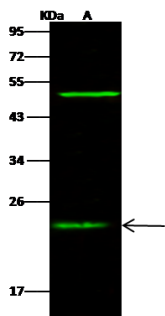
Immunohistochemical staining of human CRADD in human liver with rabbit polyclonal antibody (1:5000, formalin-fixed paraffin embedded sections).



Immunohistochemical staining of human CRADD in human kidney with rabbit polyclonal antibody (1:5000, formalin-fixed paraffin embedded sections).



Immunofluorescence staining of CRADD in HeLa cells. Cells were fixed with 4% PFA, permeabilized with 0.3% Triton X-100 in PBS, blocked with 10% serum, and incubated with rabbit anti-human CRADD polyclonal antibody (1:5000) at 4°C overnight. Then cells were stained with the Alexa Fluor®488-conjugated Goat Anti-rabbit IgG secondary antibody (green). Positive staining was localized to cytoplasm and nucleus.



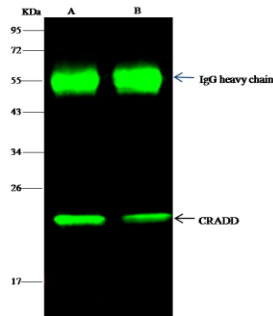
Anti-CRADD rabbit polyclonal antibody at 1:500 dilution
Lane A: K562 Whole Cell Lysate

Lysates/proteins at 30 µg per lane.

Secondary
Goat Anti- Rabbit IgG H&L (Dylight 800) at 1/10000 dilution.

Developed using the Odyssey technique.
Performed under reducing conditions.

Predicted band size: 23 kDa
Observed band size: 23 kDa (We are unsure as to the identity of these extra bands.)



CRADD was immunoprecipitated using:
Lane A: 0.5 mg K562 Whole Cell Lysate
Lane B: 0.5 mg HeLa Whole Cell Lysate

1 µL anti-CRADD rabbit polyclonal antibody
and 15 µl of 50 % Protein G agarose.

Primary antibody:
Anti-CRADD rabbit polyclonal antibody, at 1:500 dilution

Secondary antibody:
Dylight 800-labeled antibody to rabbit IgG (H+L), at 1:5000 dilution

Developed using the odyssey technique.
Performed under reducing conditions.

Predicted band size: 23 kDa
Observed band size: 23 kDa

Manufactured By Sino Biological Inc., FOR RESEARCH USE ONLY. NOT FOR USE IN HUMANS.

Tel: 215-583-7898 (US); +86-400-890-9989 (Global) •

<http://www.sinobiological.com>