

PPM1A Antibody, Rabbit PAb, Antigen Affinity Purified



Sino Biological
Biological Solution Specialist

Catalog Number: 12984-T60

GENERAL INFORMATION

Immunogen:	Recombinant Human PPM1A Protein (Catalog#12984-H08E)
Preparation	Produced in rabbits immunized with purified, recombinant Human PPM1A (rh PPM1A; Catalog#12984-H08E; P35813-1; Met1-Trp382). PPM1A specific IgG was purified by Human PPM1A affinity chromatography.
Ig Type:	Rabbit IgG
Specificity:	Human PPM1A
Formulation:	0.2 µm filtered solution in PBS
Storage:	This antibody can be stored at 2°C-8°C for one month without detectable loss of activity. Antibody products are stable for twelve months from date of receipt when stored at -20°C to -80°C. Preservative-Free. Avoid repeated freeze-thaw cycles.

APPLICATIONS

Applications:	WB, ELISA, IHC-P, IP
----------------------	----------------------

RECOMMENDED CONCENTRATION

IHC-P	IHC-P: 1:1000-1:5000
Western Blot	WB: 1:1000-1:5000
Immunoprecipitation	IP: 1-5µL/mg of lysate
ELISA	ELISA: 1:5000-1:10000 This antibody can be used at 1:5000-1:10000 with the appropriate secondary reagents to detect Human PPM1A.

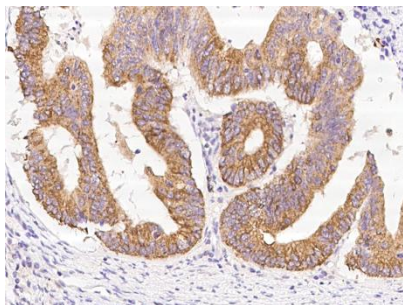
Please Note: Optimal concentrations/dilutions should be determined by the end user.

PPM1A Antibody, Rabbit PAb, Antigen Affinity Purified

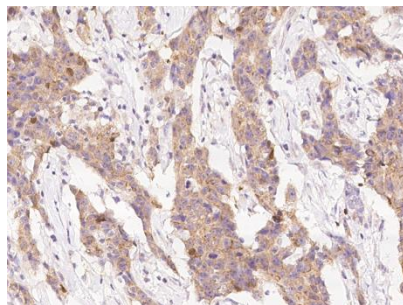


Sino Biological
Biological Solution Specialist

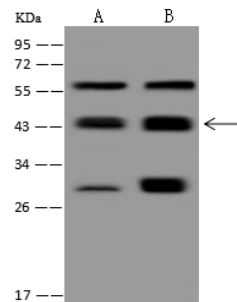
Catalog Number: 12984-T60



Immunohistochemical staining of human PPM1A in human colon carcinoma with rabbit polyclonal antibody at 1:3000 dilution, formalin-fixed paraffin embedded sections.



Immunohistochemical staining of human PPM1A in human breast carcinoma with rabbit polyclonal antibody at 1:3000 dilution, formalin-fixed paraffin embedded sections.



Anti-PPM1A rabbit polyclonal antibody at 1:2000 dilution

Lane A: Jurkat Whole Cell Lysate

Lane B: MCF-7 Whole Cell Lysate

Lysates/proteins at 30 µg per lane.

Secondary

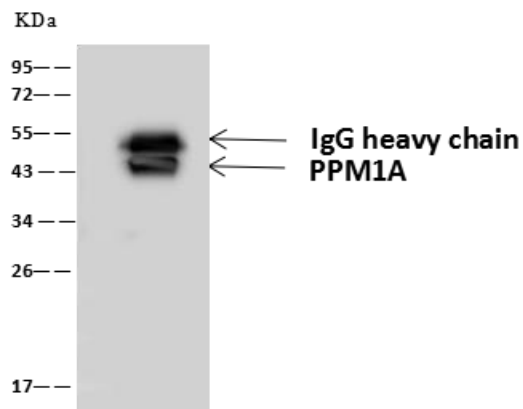
Goat Anti-Rabbit IgG (H+L)/HRP at 1/10000 dilution.

Developed using the ECL technique.
Performed under reducing conditions.

Predicted band size: 42 kDa

Observed band size: 44 kDa

(We are unsure as to the identity of these extra bands.)



PPM1A was immunoprecipitated using:
Lane A: 0.5 mg MCF7 Whole Cell Lysate

4 µL anti-PPM1A rabbit polyclonal antibody
and 60 µg of Immunomagnetic beads Protein
A/G.

Primary antibody:
Anti-PPM1A rabbit polyclonal antibody, at
1:100 dilution

Secondary antibody:
Goat Anti-Rabbit IgG (H+L)/HRP at 1/10000
dilution

Developed using the ECL technique.
Performed under reducing conditions.

Predicted band size: 43 kDa
Observed band size: 43 kDa

Manufactured By Sino Biological Inc., FOR RESEARCH USE ONLY. NOT FOR USE IN HUMANS.

Tel: 215-583-7898 (US); +86-400-890-9989 (Global) ●

<http://www.sinobiological.com>