

SerpB4 / SCCA2 Antibody, Rabbit MAb



Sino Biological
Biological Solution Specialist

Catalog Number: 12990-R001

EliteRmab® is a registered trademark of Sino Biological Inc.

GENERAL INFORMATION

Immunogen:	Recombinant Human SerpinB4 / SCCA2 protein (Catalog#12990-H07B)
Preparation	This antibody was obtained from a rabbit immunized with purified, recombinant Human SerpinB4 / SCCA2 (rh SerpinB4 / SCCA2; Catalog#12990-H07B; P48594; Met1-Pro390).
Ig Type:	Rabbit IgG
Clone ID:	001
Specificity:	Human SerpinB4 / SCCA2
Formulation:	0.2 µm filtered solution in PBS
Storage:	This antibody can be stored at 2°C-8°C for one month without detectable loss of activity. Antibody products are stable for twelve months from date of receipt when stored at -20°C to -80°C. Preservative-Free. Sodium azide is recommended to avoid contamination (final concentration 0.05%-0.1%). It is toxic to cells and should be disposed of properly. Avoid repeated freeze-thaw cycles.

APPLICATIONS

Applications:	IHC-P
----------------------	-------

RECOMMENDED CONCENTRATION

IHC-P	IHC-P: 1:100-1:500
--------------	--------------------

Please Note: Optimal concentrations/dilutions should be determined by the end user.

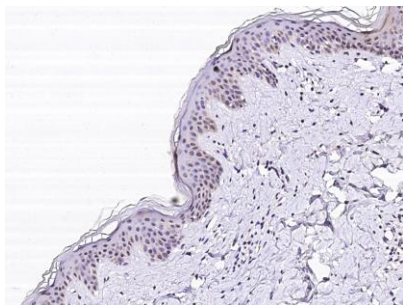
SerpinB4 / SCCA2 Antibody, Rabbit MAb

Catalog Number: 12990-R001

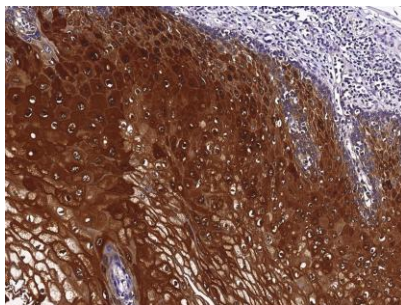


Sino Biological
Biological Solution Specialist

EliteRmab® is a registered trademark of Sino Biological Inc.



Immunohistochemical staining of human SERPINB4 in human skin with rabbit monoclonal antibody (1:200, formalin-fixed paraffin embedded sections).



Immunohistochemical staining of human SERPINB4 in human esophageal carcinoma with rabbit monoclonal antibody (1:200, formalin-fixed paraffin embedded sections).