

# Human IGSF11 / BTIGSF Protein (His Tag)



Sino Biological  
Biological Solution Specialist

Catalog Number: 13094-H08H

## General Information

### Gene Name Synonym:

BT-IgSF; CT119; CXADRL1; Igsf13; VSIG3

### Protein Construction:

A DNA sequence encoding the extracellular domain of human IGSF11 (AAH34411.1) (Met 1-Gly 240) was fused with a polyhistidine tag at the C-terminus

**Source:** Human

**Expression Host:** HEK293 Cells

## QC Testing

**Purity:** > 85 % as determined by SDS-PAGE

### Endotoxin:

< 1.0 EU per µg of the protein as determined by the LAL method

### Stability:

Samples are stable for up to twelve months from date of receipt at -70 °C

**Predicted N terminal:** Glu 23

### Molecular Mass:

The secreted recombinant human IGSF11 consists of 229 amino acids and has a predicted molecular mass of 24.6 kDa. In SDS-PAGE under reducing conditions, the apparent molecular mass of the protein is approximately 36 kDa due to glycosylation

### Formulation:

Lyophilized from sterile PBS, pH 7.4

Normally 5 % - 8 % trehalose, mannitol and 0.01% Tween80 are added as protectants before lyophilization. Specific concentrations are included in the hardcopy of COA. Please contact us for any concerns or special requirements.

## Usage Guide

### Storage:

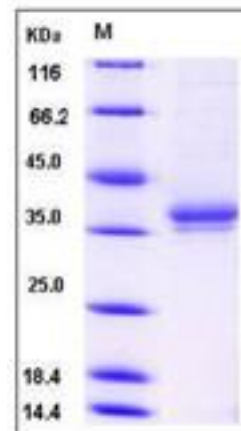
Store it under sterile conditions at -20°C to -80°C upon receiving. Recommend to aliquot the protein into smaller quantities for optimal storage.

**Avoid repeated freeze-thaw cycles.**

### Reconstitution:

Detailed reconstitution instructions are sent along with the products.

## SDS-PAGE:



## Protein Description

Immunoglobulin superfamily member 11 (IGSF11) are expressed on the plasma membrane in the testis and brain. These IGSF proteins undergo final modifications during capacitation and/or the acrosome reaction. IGSF proteins share significant homology with endothelial cell-selective adhesion molecule and coxsackievirus and adenovirus receptor, which mediates cell attachment and homotypic intercellular interactions. In clinical, the IGSF11 has been reported to over expressed in colorectal cancers and hepatocellular carcinomas as well as intestinal-type gastric cancers compared to their corresponding non- cancerous tissues. The IGSF11 has also been found expressed abundantly in testis and ovary and the IGSF11 can be used as a candidate of cancer-testis antigen.

## References

1. Toshimori K, *et al.* (2006) The involvement of immunoglobulin superfamily proteins in spermatogenesis and sperm-egg interaction. *Reproductive Medicine and Biology*. 5(2): 87-93. 2. Coyne CB, *et al.* (2005) CAR: A virus receptor within the tight junction. *Advanced Drug Delivery Reviews*. 57(6) : 869-82. 3. Watanabe T, *et al.* (2005) Identification of immunoglobulin superfamily 11 (IGSF11) as a novel target for cancer immunotherapy of gastrointestinal and hepatocellular carcinomas. *Cancer Science*. 96(8) :498-506.

Manufactured By Sino Biological Inc., FOR RESEARCH USE ONLY. NOT FOR USE IN HUMANS.

For US Customer: Fax: 267-657-0217 • Tel: 215-583-7898

Global Customer: Fax :+86-10-5862-8288 • Tel:+86-400-890-9989 • <http://www.sinobiological.com>