

Human TLE3 Protein (aa 484-772, GST Tag)



Sino Biological
Biological Solution Specialist

Catalog Number: 13099-H09E

General Information

Gene Name Synonym:

ESG; ESG3; GRG3; HsT18976

Protein Construction:

A DNA sequence encoding the N-terminal fragment of human TLE3 (Q04726-1) (Ser 484-Tyr 772) was fused with the GST tag at the N-terminus.

Source: Human

Expression Host: E. coli

QC Testing

Purity: > 78 % as determined by SDS-PAGE

Endotoxin:

Please contact us for more information.

Stability:

Samples are stable for up to twelve months from date of receipt at -70 °C

Predicted N terminal: Met

Molecular Mass:

The recombinant human TLE3/GST chimera consists of 520 amino acids and has a predicted molecular mass of 58.5 kDa as estimated in SDS-PAGE under reducing conditions.

Formulation:

Lyophilized from sterile 20mM Tris, 0.15M NaCl, 5mM GSH, pH 7.5

Normally 5 % - 8 % trehalose, mannitol and 0.01% Tween80 are added as protectants before lyophilization. Specific concentrations are included in the hardcopy of COA. Please contact us for any concerns or special requirements.

Usage Guide

Storage:

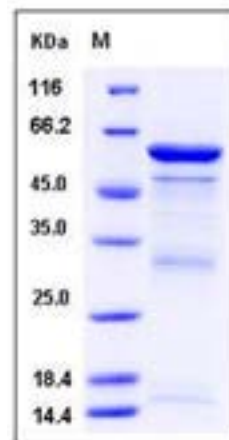
Store it under sterile conditions at -20°C to -80°C upon receiving. Recommend to aliquot the protein into smaller quantities for optimal storage.

Avoid repeated freeze-thaw cycles.

Reconstitution:

Detailed reconstitution instructions are sent along with the products.

SDS-PAGE:



References

- 1.Villanueva CJ, *et al.* (2011) TLE3 is a dual-function transcriptional coregulator of adipogenesis. *Cell Metab.* 13(4): 413-27.
- 2.Carvalho LR, *et al.* (2010) Corepressors TLE1 and TLE3 interact with HESX1 and PROP1. *Mol Endocrinol.* 24(4): 754-65.
- 3.Nakaya HI, *et al.* (2007) Splice variants of TLE family genes and up-regulation of a TLE3 isoform in prostate tumors. *Biochem Biophys Res Commun.* 364(4): 918-23.

Manufactured By Sino Biological Inc., FOR RESEARCH USE ONLY. NOT FOR USE IN HUMANS.

For US Customer: Fax: 267-657-0217 • Tel: 215-583-7898

Global Customer: Fax :+86-10-5862-8288 • Tel:+86-400-890-9989 • <http://www.sinobiological.com>