

# Human NSE / ENO2 / Enolase 2 Protein (His Tag)

Catalog Number: 13219-H08E



Sino Biological  
Biological Solution Specialist

## General Information

### Gene Name Synonym:

HEL-S-279; NSE

### Protein Construction:

A DNA sequence encoding the mature form of human ENO2 (P09104) (Met 1-Leu 434) was fused with a polyhistidine tag at the C-terminus.

**Source:** Human

**Expression Host:** E. coli

## QC Testing

**Purity:** > 97 % as determined by SDS-PAGE

### Endotoxin:

Please contact us for more information.

### Stability:

Samples are stable for up to twelve months from date of receipt at -70 °C

**Predicted N terminal:** Met 1

### Molecular Mass:

The recombinant human ENO2 comprises 444 amino acids and has a calculated molecular mass of 48.6KDa. It migrates as an approximately 48 kDa band as predicted in SDS-PAGE under reducing conditions.

### Formulation:

Lyophilized from sterile PBS, pH 7.4

Normally 5 % - 8 % trehalose, mannitol and 0.01% Tween80 are added as protectants before lyophilization. Specific concentrations are included in the hardcopy of COA. Please contact us for any concerns or special requirements.

## Usage Guide

### Storage:

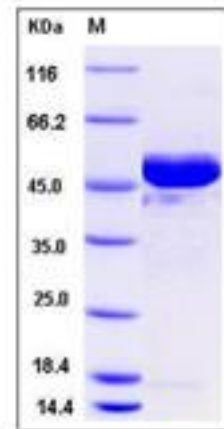
Store it under sterile conditions at -20°C to -80°C upon receiving. Recommend to aliquot the protein into smaller quantities for optimal storage.

**Avoid repeated freeze-thaw cycles.**

### Reconstitution:

Detailed reconstitution instructions are sent along with the products.

## SDS-PAGE:



## References

1. Pechumer H, *et al.* (1994) Detection of neuron-specific gamma-enolase messenger ribonucleic acid in normal human leukocytes by polymerase chain reaction amplification with nested primers. *Lab Invest.* 69 (6): 743-9.
2. Craig SP, *et al.* (1991) Localisation of neurone-specific enolase (ENO2) to 12p13. *Cytogenet Cell Genet.* 54 (1-2): 71-3.
3. Muley T, *et al.* (2003) Technical performance and diagnostic utility of the new Elecsys neuron-specific enolase enzyme immunoassay. *Clin Chem Lab Med.* 41 (1): 95-103.

Manufactured By Sino Biological Inc., FOR RESEARCH USE ONLY. NOT FOR USE IN HUMANS.

For US Customer: Fax: 267-657-0217 • Tel: 215-583-7898

Global Customer: Fax :+86-10-5862-8288 • Tel:+86-400-890-9989 • <http://www.sinobiological.com>