

ENO2 Antibody, Mouse MAb



Sino Biological
Biological Solution Specialist

Catalog Number: 13219-MM14

GENERAL INFORMATION

Immunogen:	Recombinant Human ENO2 Protein (Catalog#13219-H08E)
Preparation	This antibody was produced from a hybridoma resulting from the fusion of a mouse myeloma with B cells obtained from a mouse immunized with purified, recombinant Human ENO2 (rh ENO2; Catalog#13219-H08E; P09104; Met1-Leu434). The IgG fraction of the cell culture supernatant was purified by Protein A affinity chromatography.
Ig Type:	Mouse IgG1
Clone ID:	14
Specificity:	Human ENO2
Formulation:	0.2 µm filtered solution in PBS

APPLICATIONS

Applications:	WB, IHC-P
---------------	-----------

RECOMMENDED CONCENTRATION

IHC-P	IHC-P: 1:100-1:500
Western Blot	WB: 1:500-1:2000

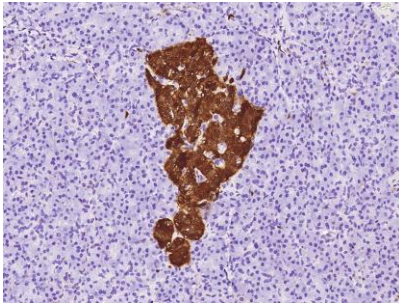
Please Note: Optimal concentrations/dilutions should be determined by the end user.

ENO2 Antibody, Mouse MAb

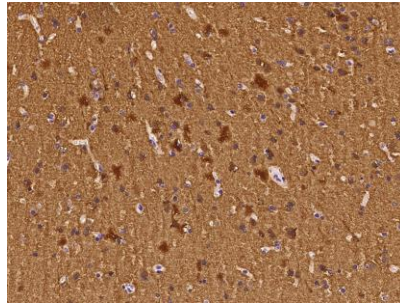


Sino Biological
Biological Solution Specialist

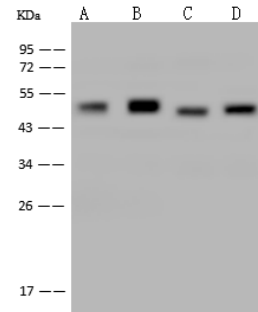
Catalog Number: 13219-MM14



Immunohistochemical staining of human ENO2 in human pancreas with mouse monoclonal antibody at 1:200 dilution, formalin-fixed paraffin embedded sections.



Immunohistochemical staining of human ENO2 in human brain with mouse monoclonal antibody at 1:200 dilution, formalin-fixed paraffin embedded sections.



Anti-ENO2 mouse monoclonal antibody at 1:500 dilution

Lane A: HepG2 Whole Cell Lysate

Lane B: SH-SY5Y Whole Cell Lysate

Lane C: HeLa Whole Cell Lysate

Lane D: Jurkat Whole Cell Lysate

Lysates/proteins at 30 µg per lane.

Secondary

Goat Anti-Mouse IgG (H+L)/HRP at 1/10000 dilution.

Developed using the ECL technique.

Performed under reducing conditions.

Predicted band size: 47 kDa

Observed band size: 50 kDa