

**Alkaline Phosphatase / ALPI  
Antibody, Rabbit PAb, Antigen  
Affinity Purified**

Catalog Number: 13225-RP02



Sino Biological  
Biological Solution Specialist

GENERAL INFORMATION	
Immunogen:	Recombinant Human ALPI / IAP protein (Catalog#13225-H08H)
Preparation	Produced in rabbits immunized with purified, recombinant Human ALPI / IAP (rh ALPI / IAP; Catalog#13225-H08H; P09923; Met1-Asp503). ALPI / IAP specific IgG was purified by Human ALPI / IAP affinity chromatography.
Ig Type:	Rabbit IgG
Specificity:	Human ALPI / IAP
Formulation:	0.2 µm filtered solution in PBS
Storage:	This antibody can be stored at 2°C-8°C for one month without detectable loss of activity. Antibody products are stable for twelve months from date of receipt when stored at -20°C to -80°C. Preservative-Free. Avoid repeated freeze-thaw cycles.
APPLICATIONS	
Applications:	ELISA, IHC-P
RECOMMENDED CONCENTRATION	
IHC-P	IHC-P: 1:500-1:2000
ELISA	ELISA: 1:5000-1:10000 This antibody can be used at 1:5000-1:10000 with the appropriate secondary reagents to detect Human ALPI / IAP.

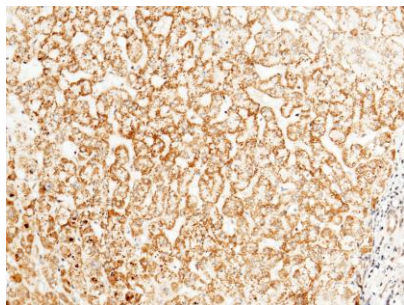
***Please Note: Optimal concentrations/dilutions should be determined by the end user.***

**Alkaline Phosphatase / ALPI**  
**Antibody, Rabbit PAb, Antigen**  
**Affinity Purified**

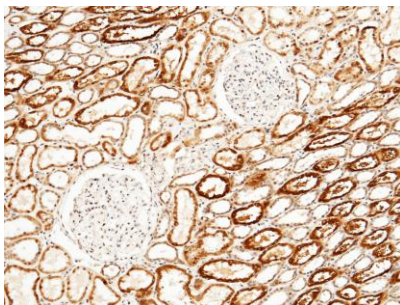
Catalog Number: 13225-RP02



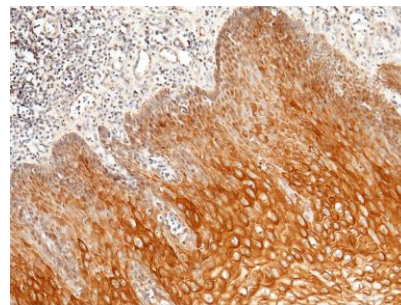
**Sino Biological**  
Biological Solution Specialist



Immunohistochemical staining of human ALPI in human liver with rabbit polyclonal antibody (1:1000, formalin-fixed paraffin embedded sections). Positive staining was localized to hepatocyte.



Immunohistochemical staining of human ALPI in human kidney with rabbit polyclonal antibody (1:1000, formalin-fixed paraffin embedded sections). Positive staining was localized to nephric tubule.



Immunohistochemical staining of human ALPI in human esophagus with rabbit polyclonal antibody (1:1000, formalin-fixed paraffin embedded sections). Positive staining was localized to epithelium.