

Human CART / CARTPT Protein (Fc Tag)



Sino Biological
Biological Solution Specialist

Catalog Number: 13240-H05H

General Information

Gene Name Synonym:

CART

Protein Construction:

A DNA sequence encoding the human CARTPT (NP_004282.1) (Met1-Leu116) was expressed with the Fc region of mouse IgG1 at the C-terminus.

Source: Human

Expression Host: HEK293 Cells

QC Testing

Purity: > 95 % as determined by SDS-PAGE

Endotoxin:

< 1.0 EU per µg of the protein as determined by the LAL method

Stability:

Samples are stable for up to twelve months from date of receipt at -70 °C

Predicted N terminal: Gln 28

Molecular Mass:

The recombinant human CARTPT/mFc comprises 323 amino acids and has a predicted molecular mass of 36.3 kDa. The apparent molecular mass of the monomer is approximately 37 kDa in SDS-PAGE under reducing conditions.

Formulation:

Lyophilized from sterile PBS, pH 7.4.

Normally 5 % - 8 % trehalose, mannitol and 0.01% Tween80 are added as protectants before lyophilization. Specific concentrations are included in the hardcopy of COA. Please contact us for any concerns or special requirements.

Usage Guide

Storage:

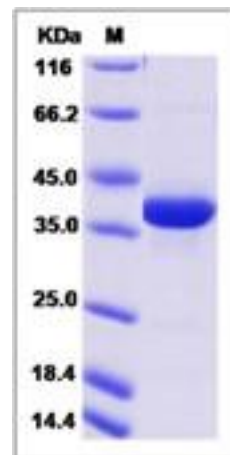
Store it under sterile conditions at -20°C to -80°C upon receiving. Recommend to aliquot the protein into smaller quantities for optimal storage.

Avoid repeated freeze-thaw cycles.

Reconstitution:

Detailed reconstitution instructions are sent along with the products.

SDS-PAGE:



Manufactured By Sino Biological Inc., FOR RESEARCH USE ONLY. NOT FOR USE IN HUMANS.

For US Customer: Fax: 267-657-0217 • Tel: 215-583-7898

Global Customer: Fax :+86-10-5862-8288 • Tel:+86-400-890-9989 • <http://www.sinobiological.com>