

# PNLIPRP1 / PLRP1 Antibody, Rabbit PAb, Antigen Affinity Purified



Sino Biological  
Biological Solution Specialist

Catalog Number: 13565-T24

GENERAL INFORMATION	
Immunogen:	Recombinant Human PNLIPRP1 / PLRP1 Protein (Catalog#13565-H08H)
Preparation	Produced in rabbits immunized with purified, recombinant Human PNLIPRP1 / PLRP1 (rh PNLIPRP1 / PLRP1; Catalog#13565-H08H; AAH25784.1; Met1-Cys467). PNLIPRP1 / PLRP1 specific IgG was purified by Human PNLIPRP1 / PLRP1 affinity chromatography.
Ig Type:	Rabbit IgG
Specificity:	Human PNLIPRP1 / PLRP1
Formulation:	0.2 µm filtered solution in PBS
Storage:	This antibody can be stored at 2°C-8°C for one month without detectable loss of activity. Antibody products are stable for twelve months from date of receipt when stored at -20°C to -80°C. Preservative-Free. Sodium azide is recommended to avoid contamination (final concentration 0.05%-0.1%). It is toxic to cells and should be disposed of properly. Avoid repeated freeze-thaw cycles.
APPLICATIONS	
Applications:	ELISA, IHC-P
RECOMMENDED CONCENTRATION	
IHC-P	IHC-P: 1:500-1:2000
ELISA	ELISA: 1:5000-1:10000 This antibody can be used at 1:5000-1:10000 with the appropriate secondary reagents to detect Human PNLIPRP1 / PLRP1.

**Please Note: Optimal concentrations/dilutions should be determined by the end user.**

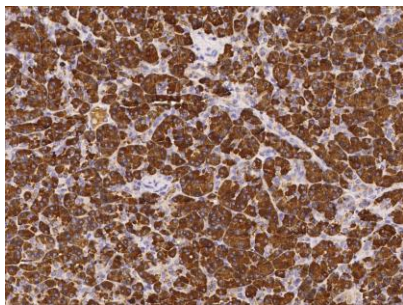
# PNLIPRP1 / PLRP1 Antibody, Rabbit PAb, Antigen Affinity Purified



Sino Biological  
Biological Solution Specialist

Catalog Number: 13565-T24

---



Immunohistochemical staining of human PNLIPRP1 in human pancreas with rabbit polyclonal antibody (1:1000, formalin-fixed paraffin embedded sections).