

Human TMED4 / ERS25 Protein (Fc Tag)

Catalog Number: 13729-H05H



Sino Biological
Biological Solution Specialist

General Information

Gene Name Synonym:

ERS25; GMP25iso; HNLF; p24alpha3

Protein Construction:

A DNA sequence encoding the human TMED4 (NP_872353.2) (Met1-Arg194) was expressed with the Fc region of mouse IgG1 at the C-terminus.

Source: Human

Expression Host: HEK293 Cells

QC Testing

Purity: > 90 % as determined by SDS-PAGE.

Endotoxin:

< 1.0 EU per µg protein as determined by the LAL method.

Stability:

Samples are stable for up to twelve months from date of receipt at -70 °C

Predicted N terminal: Leu 30

Molecular Mass:

The recombinant human TMED4 consists 399 amino acids and predicts a molecular mass of 45.6 kDa.

Formulation:

Lyophilized from sterile PBS, pH 7.4.

Normally 5 % - 8 % trehalose, mannitol and 0.01% Tween80 are added as protectants before lyophilization. Specific concentrations are included in the hardcopy of COA. Please contact us for any concerns or special requirements.

Usage Guide

Storage:

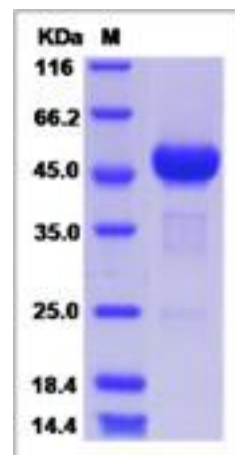
Store it under sterile conditions at -20°C to -80°C upon receiving. Recommend to aliquot the protein into smaller quantities for optimal storage.

Avoid repeated freeze-thaw cycles.

Reconstitution:

Detailed reconstitution instructions are sent along with the products.

SDS-PAGE:



Protein Description

TMED4, also known as ERS25, belongs to the EMP24/GP25L family. TMED4 may play a role in the regulation of heat-shock response and apoptosis. It is involved in vesicular protein trafficking, mainly in the early secretory pathway. TMED4 may also play a role in the biosynthesis of secreted cargo including processing. It functions in the regulation of heat-shock response and apoptosis. TMED4 also is involved in endoplasmic reticulum stress response.

References

1.Hartley JL. et al., 2001, Genome Res. 10 (11): 1788-95. 2.Matoba R. et al., 1994, Gene. 146 (2): 199-207. 3.Matsuda A. et al., 2003, Oncogene. 22 (21): 3307-18.

Manufactured By Sino Biological Inc., FOR RESEARCH USE ONLY. NOT FOR USE IN HUMANS.

For US Customer: Fax: 267-657-0217 • Tel: 215-583-7898

Global Customer: Fax :+86-10-5862-8288 • Tel:+86-400-890-9989 • <http://www.sinobiological.com>