

Human PILRB Protein (His Tag)

Catalog Number: 13746-H07H



Sino Biological
Biological Solution Specialist

General Information

Gene Name Synonym:

FDFACT1; FDFACT2

Protein Construction:

A DNA sequence encoding the human PILRB (NP_839956.1) (Gln20-Ala189) was expressed with a polyhistidine tag at the N-terminus.

Source: Human

Expression Host: HEK293 Cells

QC Testing

Purity: > 95 % as determined by SDS-PAGE.

Endotoxin:

< 1.0 EU per µg protein as determined by the LAL method.

Stability:

Samples are stable for up to twelve months from date of receipt at -70 °C

Predicted N terminal: His

Molecular Mass:

The recombinant human PILRB consists of 189 amino acids and predicts a molecular mass of 21.5 kDa.

Formulation:

Lyophilized from sterile PBS, pH 7.4.

Normally 5 % - 8 % trehalose, mannitol and 0.01% Tween80 are added as protectants before lyophilization. Specific concentrations are included in the hardcopy of COA. Please contact us for any concerns or special requirements.

Usage Guide

Storage:

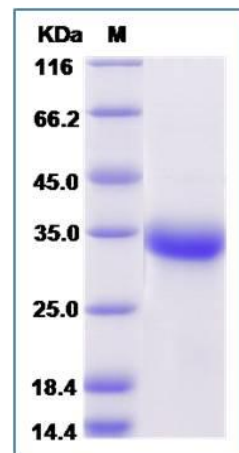
Store it under sterile conditions at -20°C to -80°C upon receiving. Recommend to aliquot the protein into smaller quantities for optimal storage.

Avoid repeated freeze-thaw cycles.

Reconstitution:

Detailed reconstitution instructions are sent along with the products.

SDS-PAGE:



References

1. Wilson MD, *et al.* (2006) Comparative analysis of the paired immunoglobulin-like receptor (PILR) locus in six mammalian genomes: duplication, conversion, and the birth of new genes. *Physiol Genomics*. 27 (3): 201-18. 2. Orr MT, *et al.* (2010) Natural killer cell education and tolerance. *Cell*. 142(6): 847-56. 3. Mousseau DD, *et al.* (2000) PILRalpha, a novel immunoreceptor tyrosine-based inhibitory motif-bearing protein, recruits SHP-1 upon tyrosine phosphorylation and is paired with the truncated counterpart PILRbeta. *J Biol Chem*. 275 (6): 4467-74.

Manufactured By Sino Biological Inc., FOR RESEARCH USE ONLY. NOT FOR USE IN HUMANS.

For US Customer: Fax: 267-657-0217 • Tel: 215-583-7898

Global Customer: Fax :+86-10-5862-8288 • Tel:+86-400-890-9989 • <http://www.sinobiological.com>