

PSGL-1/CD162/SELPLG Antibody, Mouse MAb



Sino Biological
Biological Solution Specialist

Catalog Number: 13863-M216

GENERAL INFORMATION

Immunogen:	Recombinant Human PSGL-1/CD162/SELPLG Protein (Catalog#13863-H08H)
Preparation	This antibody was produced from a hybridoma resulting from the fusion of a mouse myeloma with B cells obtained from a mouse immunized with purified, recombinant Human PSGL-1/CD162/SELPLG (rh PSGL-1/CD162/SELPLG; Catalog#13863-H08H; Q14242; Met1-Gly295). The IgG fraction of the cell culture supernatant was purified by Protein A affinity chromatography.
Ig Type:	Mouse IgG1
Clone ID:	216
Specificity:	Human PSGL-1/CD162/SELPLG
Formulation:	0.2 µm filtered solution in PBS
Storage:	This antibody can be stored at 2°C-8°C for one month without detectable loss of activity. Antibody products are stable for twelve months from date of receipt when stored at -20°C to -80°C. Preservative-Free. Avoid repeated freeze-thaw cycles.

APPLICATIONS

Applications:	IHC-P
---------------	-------

RECOMMENDED CONCENTRATION

IHC-P	IHC-P: 1:30-1:100
-------	-------------------

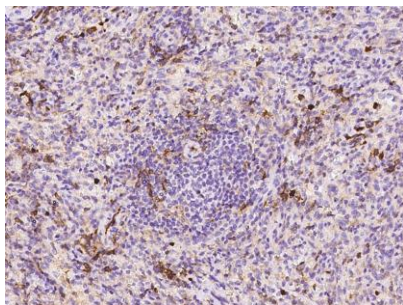
Please Note: Optimal concentrations/dilutions should be determined by the end user.

PSGL-1/CD162/SELPLG Antibody, Mouse MAb

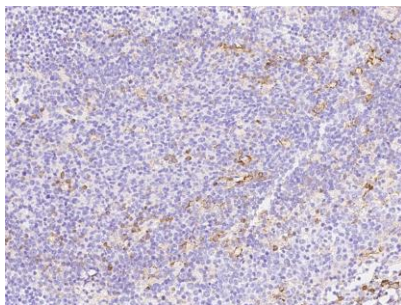


Sino Biological
Biological Solution Specialist

Catalog Number: 13863-M216



Immunohistochemical staining of human SELPLG in human spleen with mouse monoclonal antibody at 1:60 dilution, formalin-fixed paraffin embedded sections.



Immunohistochemical staining of human SELPLG in human tonsil with mouse monoclonal antibody at 1:60 dilution, formalin-fixed paraffin embedded sections.