

EphB3 / HEK2 Antibody, Rabbit PAb, Antigen Affinity Purified



Sino Biological
Biological Solution Specialist

Catalog Number: 13925-RP02

GENERAL INFORMATION	
Immunogen:	Recombinant Human EPHB3 / HEK2 protein (Catalog#13925-H20B1)
Preparation	Produced in rabbits immunized with purified, recombinant Human EPHB3 / HEK2 (rh EPHB3 / HEK2; Catalog#13925-H20B1; P54753; Gln585-Val998). EPHB3 / HEK2 specific IgG was purified by Human EPHB3 / HEK2 affinity chromatography.
Ig Type:	Rabbit IgG
Specificity:	Human EPHB3 / HEK2
Formulation:	0.2 µm filtered solution in PBS
Storage:	This antibody can be stored at 2°C-8°C for one month without detectable loss of activity. Antibody products are stable for twelve months from date of receipt when stored at -20°C to -80°C. Preservative-Free. Avoid repeated freeze-thaw cycles.
APPLICATIONS	
Applications:	ELISA,IHC-P
RECOMMENDED CONCENTRATION	
IHC-P	IHC-P: 1:500-1:2000
ELISA	ELISA: 1:5000-1:10000 This antibody can be used at 1:5000-1:10000 with the appropriate secondary reagents to detect Human EPHB3 / HEK2.

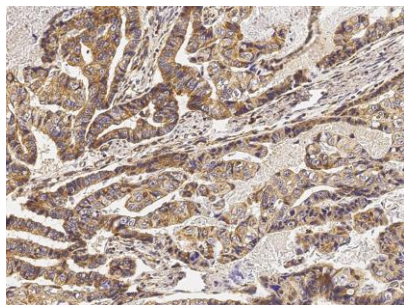
Please Note: Optimal concentrations/dilutions should be determined by the end user.

EphB3 / HEK2 Antibody, Rabbit PAb, Antigen Affinity Purified



Sino Biological
Biological Solution Specialist

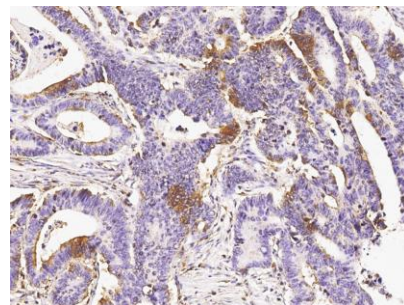
Catalog Number: 13925-RP02



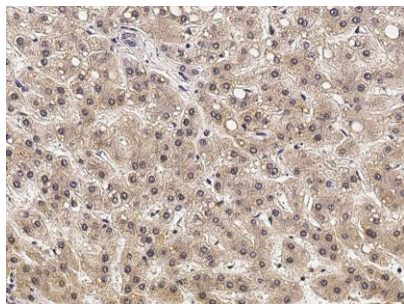
Immunohistochemical staining of human EphB3 in human gastric cancer with rabbit polyclonal antibody (1:1000, formalin-fixed paraffin embedded sections).



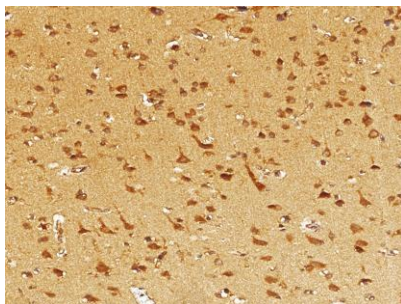
Immunohistochemical staining of human EphB3 in human colon with rabbit polyclonal antibody (1:1000, formalin-fixed paraffin embedded sections).



Immunohistochemical staining of human EphB3 in human colon carcinoma with rabbit polyclonal antibody (1:1000, formalin-fixed paraffin embedded sections).



Immunohistochemical staining of human EphB3 in human cirrhosis with rabbit polyclonal antibody (1:1000, formalin-fixed paraffin embedded sections).



Immunohistochemical staining of human EphB3 in human brain with rabbit polyclonal antibody (1:1000, formalin-fixed paraffin embedded sections).