

EIF-5A/EIF5 Antibody, Rabbit PAb, Antigen Affinity Purified



Sino Biological
Biological Solution Specialist

Catalog Number: 13932-T26

GENERAL INFORMATION

Immunogen:	Recombinant Human EIF-5A/EIF5 Protein (Catalog#13932-H09E)
Preparation	Produced in rabbits immunized with purified, recombinant Human EIF-5A/EIF5 (rh EIF-5A/EIF5; Catalog#13932-H09E; P55010; Met1-Asp150). EIF-5A/EIF5 specific IgG was purified by Human EIF-5A/EIF5 affinity chromatography.
Ig Type:	Rabbit IgG
Specificity:	Human EIF-5A/EIF5
Formulation:	0.2 µm filtered solution in PBS
Storage:	This antibody can be stored at 2°C-8°C for one month without detectable loss of activity. Antibody products are stable for twelve months from date of receipt when stored at -20°C to -80°C. Preservative-Free. Avoid repeated freeze-thaw cycles.
Alternative Names:	EIF-5,EIF-5A

APPLICATIONS

Applications:	ELISA,IHC-P,ICC/IF
----------------------	--------------------

RECOMMENDED CONCENTRATION

IHC-P	IHC-P: 1:100-1:500
ICC/IF	ICC/IF: 1:300-1:10000
ELISA	ELISA: 1:5000-1:10000 This antibody can be used at 1:5000-1:10000 with the appropriate secondary reagents to detect Human EIF-5A/EIF5.

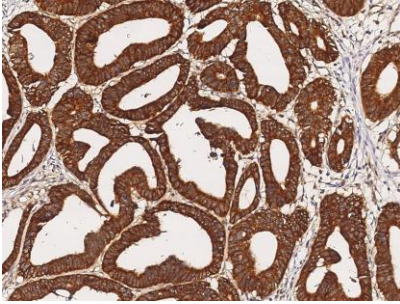
Please Note: Optimal concentrations/dilutions should be determined by the end user.

EIF-5A/EIF5 Antibody, Rabbit PAb, Antigen Affinity Purified

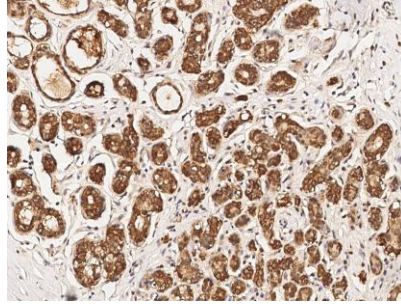


Sino Biological
Biological Solution Specialist

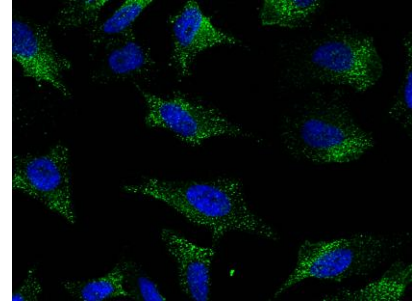
Catalog Number: 13932-T26



Immunohistochemical staining of human EIF5 in human colon carcinoma with rabbit polyclonal antibody (1:300, formalin-fixed paraffin embedded sections).



Immunohistochemical staining of human EIF5 in human breast carcinoma with rabbit polyclonal antibody (1:500, formalin-fixed paraffin embedded sections).



Immunofluorescence staining of EIF5 in HeLa cells. Cells were fixed with 4% PFA, permeabilized with 0.3% Triton X-100 in PBS, blocked with 10% serum, and incubated with rabbit anti-human EIF5 polyclonal antibody (1:1000) at 4°C overnight. Then cells were stained with the Alexa Fluor®488-conjugated Goat Anti-rabbit IgG secondary antibody (green) and counterstained with DAPI (blue). Positive staining was localized to cytoplasm.