

# Human TALLA-1 / TSPAN7 Protein (His Tag)



Sino Biological  
Biological Solution Specialist

Catalog Number: 14031-H08H

## General Information

### Gene Name Synonym:

A15; CCG-B7; CD231; DXS1692E; MRX58; MXS1; TALLA-1; TM4SF2; TM4SF2b

### Protein Construction:

A DNA sequence encoding the human TSPAN7 (AAH08429.1) (Arg113-Met213) was expressed with a polyhistidine tag at the C-terminus.

**Source:** Human

**Expression Host:** HEK293 Cells

## QC Testing

**Purity:** > 95 % as determined by SDS-PAGE

### Endotoxin:

< 1.0 EU per µg of the protein as determined by the LAL method

### Stability:

Samples are stable for up to twelve months from date of receipt at -70 °C

**Predicted N terminal:** Arg 113

### Molecular Mass:

The recombinant human TSPAN7 consists of 112 amino acids and predicts a molecular mass of 13 KDa. It migrates as an approximately 24-30 KDa band in SDS-PAGE under reducing conditions.

### Formulation:

Lyophilized from sterile PBS, pH 7.4.

Normally 5 % - 8 % trehalose, mannitol and 0.01% Tween80 are added as protectants before lyophilization. Specific concentrations are included in the hardcopy of COA. Please contact us for any concerns or special requirements.

## Usage Guide

### Storage:

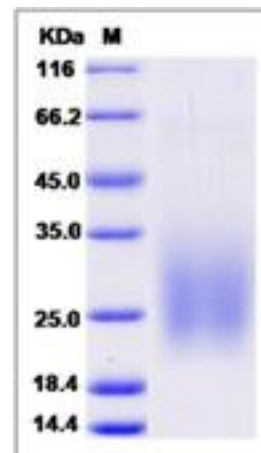
Store it under sterile conditions at -20°C to -80°C upon receiving. Recommend to aliquot the protein into smaller quantities for optimal storage.

**Avoid repeated freeze-thaw cycles.**

### Reconstitution:

Detailed reconstitution instructions are sent along with the products.

## SDS-PAGE:



## Protein Description

TALLA-1, also known as TSPAN7, is a member of the transmembrane 4 superfamily. Most members of this family are cell-surface proteins that are characterized by the presence of four hydrophobic domains. TALLA-1 gene is associated with X-linked mental retardation and neuropsychiatric diseases such as Huntington's chorea, fragile X syndrome and myotonic dystrophy. TALLA-1 is a cell surface glycoprotein and may have a role in the control of neurite outgrowth. It is known to complex with integrins.

## References

1. Berditchevski F. 2002, J Cell Sci. 114 (23): 4143-51. 2. Castellví-Bel S. et al., 2001, Mol Genet Metab. 72 (2): 104-8. 3. Abidi FE. et al., 2002, J Med Genet. 39 (6): 430-3.

Manufactured By Sino Biological Inc., FOR RESEARCH USE ONLY. NOT FOR USE IN HUMANS.

For US Customer: Fax: 267-657-0217 • Tel: 215-583-7898

Global Customer: Fax :+86-10-5862-8288 • Tel:+86-400-890-9989 • <http://www.sinobiological.com>