

ENO3 / beta-enolase Antibody, Mouse Mab



Sino Biological
Biological Solution Specialist

Catalog Number: 14270-MM02

GENERAL INFORMATION

Immunogen:	Recombinant Human ENO3 / beta-enolase protein (Catalog#14270-H07E)
Preparation	This antibody was produced from a hybridoma resulting from the fusion of a mouse myeloma with B cells obtained from a mouse immunized with purified, recombinant Human ENO3 / beta-enolase (rh ENO3; Catalog#14270-H07E; AAH17249.1; Met1-Lys434).
Clone ID:	02
Specificity:	Human ENO3 / beta-enolase
Formulation:	0.2 µm filtered solution in PBS
Storage:	This antibody can be stored at 2°C-8°C for one month without detectable loss of activity. Antibody products are stable for twelve months from date of receipt when stored at -20°C to -80°C. Preservative-Free. Sodium azide is recommended to avoid contamination (final concentration 0.05%-0.1%). It is toxic to cells and should be disposed of properly. Avoid repeated freeze-thaw cycles.

APPLICATIONS

Applications:	WB,IHC-P
----------------------	----------

RECOMMENDED CONCENTRATION

IHC-P	IHC-P: 1:50-1:200
Western Blot	WB: 1:500-1:2000

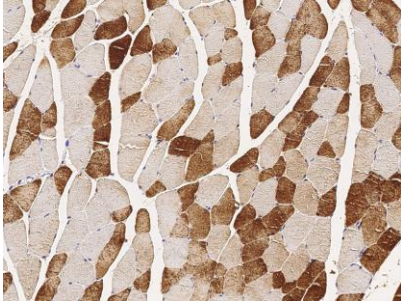
Please Note: Optimal concentrations/dilutions should be determined by the end user.

ENO3 / beta-enolase Antibody, Mouse Mab

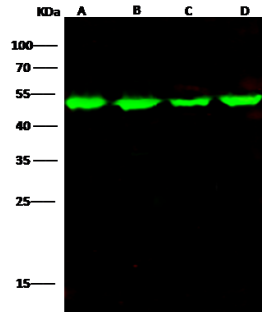


Sino Biological
Biological Solution Specialist

Catalog Number: 14270-MM02



Immunochemical staining of human ENO3 in human skeletal muscle with mouse monoclonal antibody (1:100, formalin-fixed paraffin embedded sections).



Anti-ENO3 mouse monoclonal antibody at 1:500 dilution

Lane A: HepG2 Whole Cell Lysate

Lane B: Hela Whole Cell Lysate

Lane C: MOLT-4 Whole Cell Lysate

Lane D: Raji Whole Cell Lysate

Lysates/proteins at 30 µg per lane.

Secondary

Goat Anti-Mouse IgG H&L (Dylight800) at 1/15000 dilution.

Developed using the Odyssey technique.

Performed under reducing conditions.

Predicted band size:47 kDa

Observed band size:52 kDa