

Human MSH2 Protein (His & GST Tag)



Sino Biological
Biological Solution Specialist

Catalog Number: 14425-H20B

General Information

Gene Name Synonym:

COCA1; FCC1; HNPCC; HNPCC1; LCFS2

Protein Construction:

A DNA sequence encoding the human MSH2 (NP_000242.1) (Met1-Thr934) was expressed with a C-terminal polyhistidine-tagged GST tag at the N-terminus (his-GST).

Source: Human

Expression Host: Baculovirus-Insect Cells

QC Testing

Purity: > 90 % as determined by SDS-PAGE.

Endotoxin:

< 1.0 EU per µg protein as determined by the LAL method.

Stability:

Samples are stable for up to twelve months from date of receipt at -70 °C

Predicted N terminal: Met

Molecular Mass:

The recombinant human MSH2 consists 1171 amino acids and predicts a molecular mass of 132.6 kDa.

Formulation:

Lyophilized from sterile 20 mM Tris, 500 mM NaCl, pH 7.4, 10 % glycerol, 20 mM GSH.

Normally 5 % - 8 % trehalose, mannitol and 0.01% Tween80 are added as protectants before lyophilization. Specific concentrations are included in the hardcopy of COA. Please contact us for any concerns or special requirements.

Usage Guide

Storage:

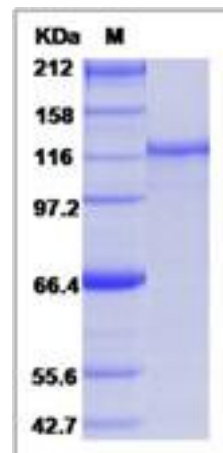
Store it under sterile conditions at -20°C to -80°C upon receiving. Recommend to aliquot the protein into smaller quantities for optimal storage.

Avoid repeated freeze-thaw cycles.

Reconstitution:

Detailed reconstitution instructions are sent along with the products.

SDS-PAGE:



Manufactured By Sino Biological Inc., FOR RESEARCH USE ONLY. NOT FOR USE IN HUMANS.

For US Customer: Fax: 267-657-0217 • Tel: 215-583-7898

Global Customer: Fax :+86-10-5862-8288 • Tel:+86-400-890-9989 • <http://www.sinobiological.com>