

PDHA1 Antibody, Rabbit MAb



Sino Biological
Biological Solution Specialist

Catalog Number: 14567-R006

EliteRmab® is a registered trademark of Sino Biological Inc.

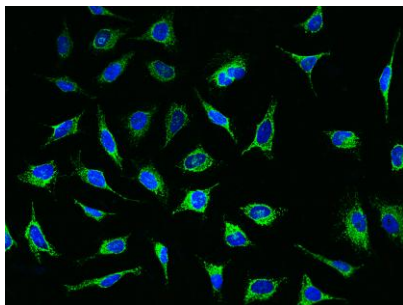
GENERAL INFORMATION	
Immunogen:	Recombinant Human PDHA1 Protein (Catalog#14567-H20B)
Preparation	This antibody was obtained from a rabbit immunized with purified, recombinant Human PDHA1 (rh PDHA1; Catalog#14567-H20B; P08559-1; Phe30-Ser390).
Ig Type:	Rabbit IgG
Clone ID:	006
Specificity:	Human PDHA1
Formulation:	Elution 3.0 +2.5% 2M Tris
Storage:	This antibody can be stored at 2°C-8°C for one month without detectable loss of activity. Antibody products are stable for twelve months from date of receipt when stored at -20°C to -80°C. Preservative-Free. Avoid repeated freeze-thaw cycles.
Alternative Names:	PDHA,PDHAD,PDHCE1A,PHE1A
APPLICATIONS	
Applications:	ICC/IF
RECOMMENDED CONCENTRATION	
ICC/IF	ICC/IF: 1:20-1:100

Please Note: Optimal concentrations/dilutions should be determined by the end user.



Catalog Number: 14567-R006

EliteRmab® is a registered trademark of Sino Biological Inc.



Immunofluorescence staining of PDHA1 in HeLa cells. Cells were fixed with 4% PFA, permeabilized with 0.1% Triton X-100 in PBS, blocked with 10% serum, and incubated with rabbit anti-Human PDHA1 monoclonal antibody (dilution ratio 1:60) at 4°C overnight. Then cells were stained with the Alexa Fluor®488-conjugated Goat Anti-rabbit IgG secondary antibody (green) and counterstained with DAPI (blue). Positive staining was localized to Cytoplasm.