

MAPRE3 / EB3 Antibody, Rabbit PAb, Antigen Affinity Purified



Sino Biological
Biological Solution Specialist

Catalog Number: 14614-T08

GENERAL INFORMATION

Immunogen:	Recombinant Human MAPRE3 / EB3 Protein (Catalog#14614-H07E)
Preparation	Produced in rabbits immunized with purified, recombinant Human MAPRE3 / EB3 (rh MAPRE3 / EB3; Catalog#14614-H07E; Q9UPY8-1; Met1-Tyr281). MAPRE3 / EB3 specific IgG was purified by Human MAPRE3 / EB3 affinity chromatography.
Ig Type:	Rabbit IgG
Specificity:	Human MAPRE3 / EB3
Formulation:	0.2 µm filtered solution in PBS
Storage:	This antibody can be stored at 2°C-8°C for one month without detectable loss of activity. Antibody products are stable for twelve months from date of receipt when stored at -20°C to -80°C. Preservative-Free. Sodium azide is recommended to avoid contamination (final concentration 0.05%-0.1%). It is toxic to cells and should be disposed of properly. Avoid repeated freeze-thaw cycles.

APPLICATIONS

Applications:	IHC-P
---------------	-------

RECOMMENDED CONCENTRATION

IHC-P	IHC-P: 1:1000-1:4000
-------	----------------------

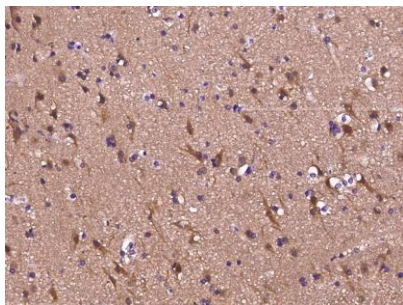
Please Note: Optimal concentrations/dilutions should be determined by the end user.

MAPRE3 / EB3 Antibody, Rabbit PAb, Antigen Affinity Purified



Sino Biological
Biological Solution Specialist

Catalog Number: 14614-T08



Immunohistochemical staining of human MAPRE3
in human brain with rabbit polyclonal antibody
(1:2000, formalin-fixed paraffin embedded
sections).