

PSME2 / PA28b Antibody, Rabbit PAb, Antigen Affinity Purified



Sino Biological
Biological Solution Specialist

Catalog Number: 14640-T52

GENERAL INFORMATION

Immunogen:	14640-H07E
Preparation	Produced in rabbits immunized with purified, recombinant Human PSME2 / PA28b (rh PSME2 / PA28b; Catalog#14640-H07E; Met1-Tyr239). PSME2 / PA28b specific IgG was purified by Human PSME2 / PA28b affinity chromatography.
Ig Type:	Rabbit IgG
Specificity:	Human PSME2 / PA28b
Formulation:	0.2 µm filtered solution in PBS
Storage:	This antibody can be stored at 2°C-8°C for one month without detectable loss of activity. Antibody products are stable for twelve months from date of receipt when stored at -20°C to -80°C. Avoid repeated freeze-thaw cycles.
Alternative Names:	PA28B

APPLICATIONS

Applications:	WB,ELISA,IP
---------------	-------------

RECOMMENDED CONCENTRATION

Western Blot	WB: 1:500-1:2000
Immunoprecipitation	IP: 0.5-2 µL/mg of lysate
ELISA	ELISA: 1:5000-1:10000

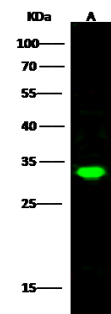
Please Note: Optimal concentrations/dilutions should be determined by the end user.

PSME2 / PA28b Antibody, Rabbit PAb, Antigen Affinity Purified



Sino Biological
Biological Solution Specialist

Catalog Number: 14640-T52



Anti-PSME2 rabbit polyclonal antibody at 1:500 dilution

Lane A: HeLa Whole Cell Lysate

Lysates/proteins at 30 µg per lane.

Secondary

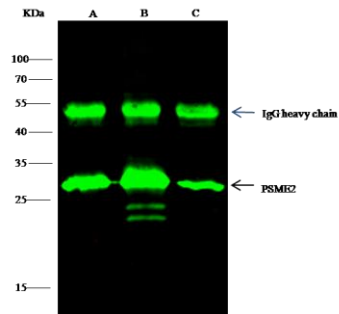
Goat Anti-Rabbit IgG H&L (Dylight800) at 1/10000 dilution.

Developed using the Odyssey technique.

Performed under reducing conditions.

Predicted band size: 26 kDa

Observed band size: 31 kDa



PSME2 was immunoprecipitated using:

Lane A: 0.5 mg HeLa Whole Cell Lysate

Lane B: 0.5 mg HepG2 Whole Cell Lysate

Lane C: 0.5 mg 293T Whole Cell Lysate

2 µL anti-PSME2 rabbit polyclonal antibody and 15 µL of 50 % Protein G agarose.

Primary antibody:

Anti-PSME2 rabbit polyclonal antibody, at 1:200 dilution

Secondary antibody:

Dylight 800-labeled antibody to rabbit IgG (H+L), at 1:5000 dilution

Developed using the Odyssey technique.

Performed under reducing conditions.

Predicted band size: 27 kDa

Observed band size: 27 kDa