

CETN2 / Centrin 2 Antibody, Rabbit PAb, Antigen Affinity Purified



Sino Biological
Biological Solution Specialist

Catalog Number: 14983-T50

GENERAL INFORMATION

| | |
|---------------------------|--|
| Immunogen: | Recombinant Human CETN2 / Centrin 2 Protein (Catalog#14983-H07E) |
| Preparation | Produced in rabbits immunized with purified, recombinant Human CETN2 / Centrin 2 (rh CETN2 / Centrin 2; Catalog#14983-H07E; P41208; Met1-Tyr171). CETN2 / Centrin 2 specific IgG was purified by Human CETN2 / Centrin 2 affinity chromatography. |
| Ig Type: | Rabbit IgG |
| Specificity: | Human CETN2 / Centrin 2 |
| Formulation: | 0.2 µm filtered solution in PBS |
| Storage: | This antibody can be stored at 2°C-8°C for one month without detectable loss of activity. Antibody products are stable for twelve months from date of receipt when stored at -20°C to -80°C. Preservative-Free. Avoid repeated freeze-thaw cycles. |
| Alternative Names: | CALT,CEN2 |

APPLICATIONS

| | |
|----------------------|-----------------|
| Applications: | WB,ELISA,ICC/IF |
|----------------------|-----------------|

RECOMMENDED CONCENTRATION

| | |
|---------------------|---|
| ICC/IF | ICC/IF: 1:300-1:10000 |
| Western Blot | WB: 1:500-1:2000 |
| ELISA | ELISA: 1:5000-1:10000 This antibody can be used at 1:5000-1:10000 with the appropriate secondary reagents to detect Human CETN2 / Centrin 2. |

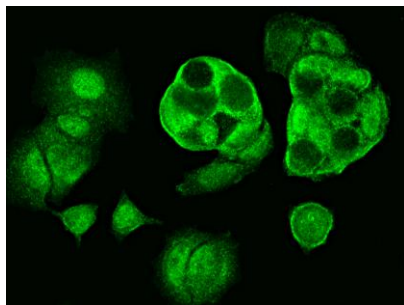
Please Note: Optimal concentrations/dilutions should be determined by the end user.

CETN2 / Centrin 2 Antibody, Rabbit PAb, Antigen Affinity Purified

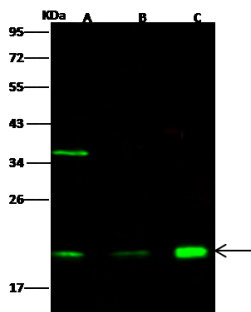


Sino Biological
Biological Solution Specialist

Catalog Number: 14983-T50



Immunofluorescence staining of His-CETN2 in MCF7 cells. Cells were fixed with 4% PFA, blocked with 10% serum, and incubated with rabbit anti- His-CETN2 polyclonal antibody (dilution ratio: 1:1000) at 4°C overnight. Then cells were stained with the Alexa Fluor®488-conjugated Goat Anti-rabbit IgG secondary antibody (green). Positive staining was localized to cytoplasm and nucleus.



Anti-CETN2 rabbit polyclonal antibody at 1:500 dilution

Lane A: A549 Whole Cell Lysate

Lane B: HT29 Whole Cell Lysate

Lane C: MCF7 Whole Cell Lysate

Lysates/proteins at 30 µg per lane.

Secondary

Goat Anti- Rabbit IgG H&L (Dylight 800) at 1/10000 dilution.

Developed using the Odyssey technique.
Performed under reducing conditions.

Predicted band size: 20 kDa

Observed band size: 20 kDa

(We are unsure as to the identity of these extra bands.)