

# T Plastin / PLS3 Antibody, Rabbit PAb, Antigen Affinity Purified



Sino Biological  
Biological Solution Specialist

Catalog Number: 15042-T60

## GENERAL INFORMATION

<b>Immunogen:</b>	Recombinant Human T Plastin / PLS3 Protein (Catalog#15042-H07E)
<b>Preparation</b>	Produced in rabbits immunized with purified, recombinant Human T Plastin / PLS3 (rh T Plastin / PLS3; Catalog#15042-H07E; P13797; Gly102-Asn375). T Plastin / PLS3 specific IgG was purified by Human T Plastin / PLS3 affinity chromatography.
<b>Ig Type:</b>	Rabbit IgG
<b>Specificity:</b>	Human T Plastin / PLS3
<b>Formulation:</b>	0.2 µm filtered solution in PBS
<b>Storage:</b>	This antibody can be stored at 2°C-8°C for one month without detectable loss of activity. Antibody products are stable for twelve months from date of receipt when stored at -20°C to -80°C. Preservative-Free. Avoid repeated freeze-thaw cycles.
<b>Alternative Names:</b>	BMND18, T-plastin

## APPLICATIONS

<b>Applications:</b>	WB, ELISA, IHC-P, IP
----------------------	----------------------

## RECOMMENDED CONCENTRATION

<b>IHC-P</b>	IHC-P: 1:200-1:1000
<b>Western Blot</b>	WB: 1:500-1:2000
<b>Immunoprecipitation</b>	IP: 1-5 µL/mg of lysate
<b>ELISA</b>	ELISA: 1:5000-1:10000 This antibody can be used at 1:5000-1:10000 with the appropriate secondary reagents to detect Human T Plastin / PLS3.

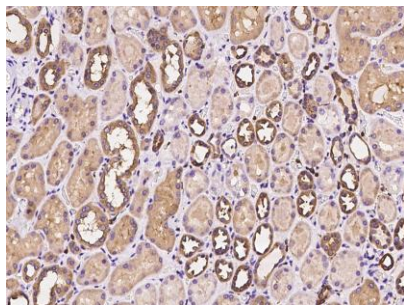
**Please Note:** Optimal concentrations/dilutions should be determined by the end user.

# T Plastin / PLS3 Antibody, Rabbit PAb, Antigen Affinity Purified

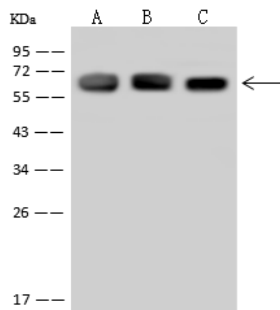


Sino Biological  
Biological Solution Specialist

Catalog Number: 15042-T60



Immunohistochemical staining of human PLS3 in human kidney with rabbit polyclonal antibody at 1:300 dilution, formalin-fixed paraffin embedded sections.

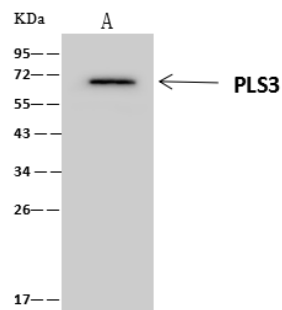


Anti-PLS3 rabbit polyclonal antibody at 1:500 dilution  
Lane A: Raji Whole Cell Lysate  
Lane B: K562 Whole Cell Lysate  
Lane C: HT1080 Whole Cell Lysate

Lysates/proteins at 30 µg per lane.  
Secondary  
Goat Anti-Rabbit IgG (H+L)/HRP at 1/10000 dilution.

Developed using the ECL technique.  
Performed under reducing conditions.

Predicted band size: 70 kDa  
Observed band size: 70 kDa



PLS3 was immunoprecipitated using:  
Lane A: 0.5 mg K562 Whole Cell Lysate

4 µL anti-PLS3 rabbit polyclonal antibody and  
60 µg of Immunomagnetic beads Protein A/G.

Primary antibody:  
Anti-PLS3 rabbit polyclonal antibody, at 1:100 dilution

Secondary antibody:  
Clean-Blot IP Detection Reagent (HRP) at 1:1000 dilution

Developed using the ECL technique.  
Performed under reducing conditions.

Predicted band size: 60 kDa  
Observed band size: 60 kDa