

# Human SBDS / Shwachman-Bodian-Diamond syndrome Protein (His Tag)

Catalog Number: 15362-H07E



Sino Biological  
Biological Solution Specialist

## General Information

### Gene Name Synonym:

CGI-97; SDS; SWDS

### Protein Construction:

A DNA sequence encoding the human SBDS (Q9Y3A5) (Met1-Glu250) was expressed with a polyhistidine tag at the N-terminus.

**Source:** Human

**Expression Host:** E. coli

## QC Testing

**Purity:** > 95 % as determined by SDS-PAGE

### Endotoxin:

Please contact us for more information.

### Stability:

Samples are stable for up to twelve months from date of receipt at -70 °C

**Predicted N terminal:** His

### Molecular Mass:

The recombinant human SBDS consists of 268 amino acids and predicts a molecular mass of 31 KDa. It migrates as an approximately 30-36 KDa band in SDS-PAGE under reducing conditions.

### Formulation:

Lyophilized from sterile PBS, 10% glycerol.

Normally 5 % - 8 % trehalose, mannitol and 0.01% Tween80 are added as protectants before lyophilization. Specific concentrations are included in the hardcopy of COA. Please contact us for any concerns or special requirements.

## Usage Guide

### Storage:

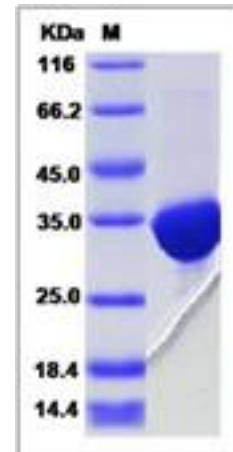
Store it under sterile conditions at -20°C to -80°C upon receiving. Recommend to aliquot the protein into smaller quantities for optimal storage.

**Avoid repeated freeze-thaw cycles.**

### Reconstitution:

Detailed reconstitution instructions are sent along with the products.

## SDS-PAGE:



**Manufactured By Sino Biological Inc., FOR RESEARCH USE ONLY. NOT FOR USE IN HUMANS.**

**For US Customer:** Fax: 267-657-0217 • Tel: 215-583-7898

**Global Customer:** Fax :+86-10-5862-8288 • Tel:+86-400-890-9989 • <http://www.sinobiological.com>