

Human PRAC Protein (His & SUMO Tag)



Sino Biological
Biological Solution Specialist

Catalog Number: 15425-H28E

General Information

Gene Name Synonym:

C17orf92; PRAC

Protein Construction:

A DNA sequence encoding the human PRAC (NP_115767.1) (Met1-Phe57) was expressed with a N-terminal polyhistidine-tagged SUMO tag at the N-terminus.

Source: Human

Expression Host: E. coli

QC Testing

Purity: > 85 % as determined by SDS-PAGE

Endotoxin:

Please contact us for more information.

Stability:

Samples are stable for up to twelve months from date of receipt at -70 °C

Predicted N terminal: His

Molecular Mass:

The recombinant human PRAC consists of 168 amino acids and predicts a molecular mass of 18.8 KDa. It migrates as an approximately 25 KDa band in SDS-PAGE under reducing conditions.

Formulation:

Lyophilized from sterile PBS, pH 7.4.

Normally 5 % - 8 % trehalose, mannitol and 0.01% Tween80 are added as protectants before lyophilization. Specific concentrations are included in the hardcopy of COA. Please contact us for any concerns or special requirements.

Usage Guide

Storage:

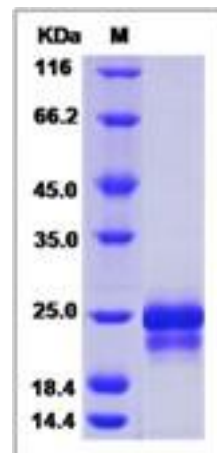
Store it under sterile conditions at -20°C to -80°C upon receiving. Recommend to aliquot the protein into smaller quantities for optimal storage.

Avoid repeated freeze-thaw cycles.

Reconstitution:

Detailed reconstitution instructions are sent along with the products.

SDS-PAGE:



Manufactured By Sino Biological Inc., FOR RESEARCH USE ONLY. NOT FOR USE IN HUMANS.

For US Customer: Fax: 267-657-0217

• Tel: 215-583-7898

Global Customer: Fax :+86-10-5862-8288

• Tel:+86-400-890-9989

• <http://www.sinobiological.com>