

Human Interleukin-31 receptor A / IL31RA Protein (Fc Tag, ECD)

Catalog Number: 15878-H02H



Sino Biological
Biological Solution Specialist

General Information

Gene Name Synonym:

CRL; CRL3; GLM-R; GLMR; GPL; hGLM-R; IL-31RA; PLCA2; PRO21384

Protein Construction:

A DNA sequence encoding the human IL31RA (EAW54932.1) (Met1-Ser516) was expressed with the Fc region of human IgG1 at the C-terminus.

Source: Human

Expression Host: HEK293 Cells

QC Testing

Purity: > 90 % as determined by SDS-PAGE.

Bio Activity:

1. Measured by its binding ability in a functional ELISA. 2. Immobilized human IL31-His (11557-H08H) at 10 µg/mL (100 µL/well) can bind human IL31RA-Fc (Cat: 15878-H02H), the EC_{50} of human IL31RA-Fc is 0.4-1.6 µg/mL.

Endotoxin:

< 1.0 EU per µg protein as determined by the LAL method.

Stability:

Samples are stable for up to twelve months from date of receipt at -70 °C

Predicted N terminal: Ala 20

Molecular Mass:

The recombinant human IL31RA consists 735 amino acids and predicts a molecular mass of 83.5 kDa.

Formulation:

Lyophilized from sterile PBS, pH 7.4.

Normally 5 % - 8 % trehalose, mannitol and 0.01% Tween80 are added as protectants before lyophilization. Specific concentrations are included in the hardcopy of COA. Please contact us for any concerns or special requirements.

Usage Guide

Storage:

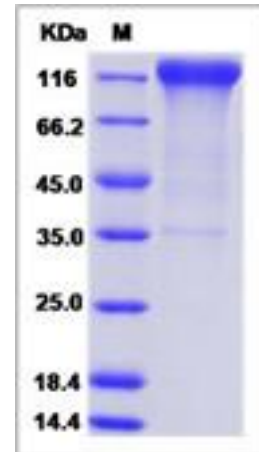
Store it under sterile conditions at -20°C to -80°C upon receiving. Recommend to aliquot the protein into smaller quantities for optimal storage.

Avoid repeated freeze-thaw cycles.

Reconstitution:

Detailed reconstitution instructions are sent along with the products.

SDS-PAGE:



Manufactured By Sino Biological Inc., FOR RESEARCH USE ONLY. NOT FOR USE IN HUMANS.

For US Customer: Fax: 267-657-0217 • Tel: 215-583-7898

Global Customer: Fax :+86-10-5862-8288 • Tel:+86-400-890-9989 • <http://www.sinobiological.com>