

Human Cardiotrophin-1 / CTF1 Protein (Fc Tag)

Catalog Number: 16013-H01H



Sino Biological
Biological Solution Specialist

General Information

Gene Name Synonym:

CT-1; CT1

Protein Construction:

A DNA sequence encoding the human CTF1(NP_001321.1)(Ser2-Ala201) was expressed with the fused Fc region of human IgG1 at the N-terminus.

Source: Human

Expression Host: HEK293 Cells

QC Testing

Purity: (76.0±8.5) % as determined by SDS-PAGE

Bio Activity:

Measured in a cell proliferation assay using TF-1 human erythroleukemic cells. The ED_{50} for this effect is typically 0.015-0.06 μ g/mL.

Endotoxin:

< 1.0 EU per μ g of the protein as determined by the LAL method

Stability:

Samples are stable for up to twelve months from date of receipt at -70 °C

Predicted N terminal: Glu

Molecular Mass:

The recombinant human CTF1/Fc is a disulfide-linked homodimer. The reduced monomer comprises 460 amino acids and has a predicted molecular mass of 49.5 kDa. The apparent molecular mass of the protein is approximately 54 and 37 kDa in SDS-PAGE under reducing conditions due to glycosylation.

Formulation:

Lyophilized from sterile PBS, pH 7.4.

Normally 5 % - 8 % trehalose, mannitol and 0.01% Tween80 are added as protectants before lyophilization. Specific concentrations are included in the hardcopy of COA. Please contact us for any concerns or special requirements.

Usage Guide

Storage:

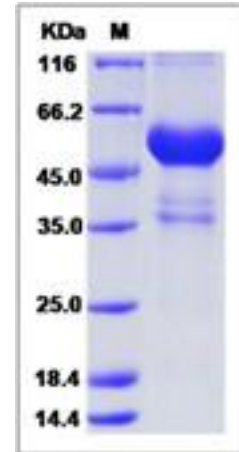
Store it under sterile conditions at -20°C to -80°C upon receiving. Recommend to aliquot the protein into smaller quantities for optimal storage.

Avoid repeated freeze-thaw cycles.

Reconstitution:

Detailed reconstitution instructions are sent along with the products.

SDS-PAGE:



Manufactured By Sino Biological Inc., FOR RESEARCH USE ONLY. NOT FOR USE IN HUMANS.

For US Customer: Fax: 267-657-0217 • Tel: 215-583-7898

Global Customer: Fax :+86-10-5862-8288 • Tel:+86-400-890-9989 • <http://www.sinobiological.com>