

# Human Frizzled-10 / FZD10 Protein (His Tag)



Sino Biological  
Biological Solution Specialist

Catalog Number: 16045-H08H

## General Information

### Gene Name Synonym:

CD350; FZ-10; Fz10; FzE7; hFz10

### Protein Construction:

A DNA sequence encoding the human FZD10 (NP\_009128.1) (Met1-Gly161) was expressed with a polyhistidine tag at the C-terminus.

**Source:** Human

**Expression Host:** HEK293 Cells

## QC Testing

**Purity:** > 95 % as determined by SDS-PAGE

### Endotoxin:

< 1.0 EU per µg of the protein as determined by the LAL method

### Stability:

Samples are stable for up to twelve months from date of receipt at -70 °C

**Predicted N terminal:** Ile 21

### Molecular Mass:

The recombinant human FZD10 consists of 152 amino acids and predicts a molecular mass of 17.5 KDa. It migrates as an approximately 25.4 KDa band in SDS-PAGE under reducing conditions.

### Formulation:

Lyophilized from sterile PBS, pH 7.4.

Normally 5 % - 8 % trehalose, mannitol and 0.01% Tween80 are added as protectants before lyophilization. Specific concentrations are included in the hardcopy of COA. Please contact us for any concerns or special requirements.

## Usage Guide

### Storage:

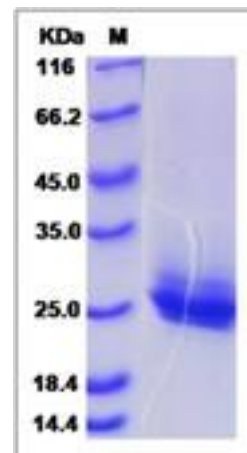
Store it under sterile conditions at -20°C to -80°C upon receiving. Recommend to aliquot the protein into smaller quantities for optimal storage.

**Avoid repeated freeze-thaw cycles.**

### Reconstitution:

Detailed reconstitution instructions are sent along with the products.

## SDS-PAGE:



## Protein Description

Frizzled-10, also known as Fz-10, CD350 and FZD10, is a multi-pass membrane protein which belongs to the G-protein coupled receptor Fz/Smo family. Frizzled-10 / FZD10 is abundantly expressed in the cerebellum, followed by cerebral cortex, medulla and spinal cord; very low levels in total brain, frontal lobe, temporal lobe and putamen. It is weakly expressed in adult brain, heart, lung, skeletal muscle, pancreas, spleen and prostate. Frizzled-10 / FZD10 is a receptor for Wnt proteins. Most of frizzled receptors are coupled to the beta-catenin canonical signaling pathway, which leads to the activation of dishevelled proteins, inhibition of GSK-3 kinase, nuclear accumulation of beta-catenin and activation of Wnt target genes. A second signaling pathway involving PKC and calcium fluxes has been seen for some family members, it is not yet clear if it represents a distinct pathway or if it can be integrated in the canonical pathway, as PKC seems to be required for Wnt-mediated inactivation of GSK-3 kinase. Both pathways seem to involve interactions with G-proteins. Frizzled-10 / FZD10 may also be involved in transduction and intercellular transmission of polarity information during tissue morphogenesis and/or in differentiated tissues.

## References

- 1.Kwon H.S., *et al.*,(2009), Myocilin is a modulator of Wnt signaling. *Mol. Cell. Biol.* 29:2139-2154.
- 2.The MGC Project Team, *et al.*, (2004), The status, quality, and expansion of the NIH full-length cDNA project: the Mammalian Gene Collection (MGC). *Genome Res.* 14:2121-2127.
- 3.Tanaka S., *et al.*,(1998), A novel frizzled gene identified in human esophageal carcinoma mediates APC/beta-catenin signals. *Proc. Natl. Acad. Sci. U.S.A.* 95:10164-10169.

Manufactured By Sino Biological Inc., FOR RESEARCH USE ONLY. NOT FOR USE IN HUMANS.

For US Customer: Fax: 267-657-0217 • Tel: 215-583-7898

Global Customer: Fax :+86-10-5862-8288 • Tel:+86-400-890-9989 • <http://www.sinobiological.com>