

Growth Hormone / GH1 Antibody, Rabbit MAb



Sino Biological
Biological Solution Specialist

Catalog Number: 16122-R177

EliteRmab® is a registered trademark of Sino Biological Inc.

GENERAL INFORMATION

Immunogen:	Recombinant Human Growth Hormone / GH1 Protein (Catalog#16122-H07E)
Preparation	This antibody was obtained from a rabbit immunized with purified, recombinant Human Growth Hormone / GH1 (rh Growth Hormone / GH1; Catalog#16122-H07E; P01241; Phe27-Phe217).
Ig Type:	Rabbit IgG
Clone ID:	177
Specificity:	Human Growth Hormone / GH1
Formulation:	0.2 µm filtered solution in PBS
Storage:	This antibody can be stored at 2°C-8°C for one month without detectable loss of activity. Antibody products are stable for twelve months from date of receipt when stored at -20°C to -80°C. Preservative-Free. Avoid repeated freeze-thaw cycles.
Alternative Names:	

APPLICATIONS

Applications:	IHC-P
----------------------	-------

RECOMMENDED CONCENTRATION

IHC-P	IHC-P: 1:500-1:3000
--------------	---------------------

Please Note: Optimal concentrations/dilutions should be determined by the end user.

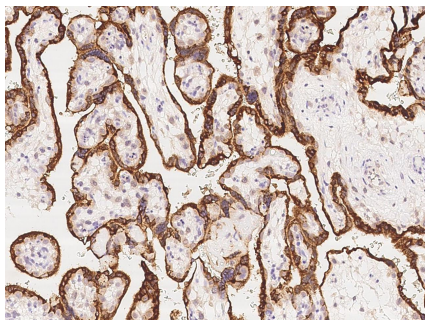
Growth Hormone / GH1 Antibody, Rabbit MAb

Catalog Number: 16122-R177



Sino Biological
Biological Solution Specialist

EliteRmab® is a registered trademark of Sino Biological Inc.



Immunochemical staining of human Growth Hormone in human placenta with rabbit monoclonal antibody at 1:1000 dilution, formalin-fixed paraffin embedded sections.