

Human TL1A / TNFSF15 Protein (rFc Tag)

Catalog Number: 17049-H15H



Sino Biological
Biological Solution Specialist

General Information

Gene Name Synonym:

TL1; TL1A; VEGI; VEGI192A

Protein Construction:

A DNA sequence encoding the human TNFSF15 (NP_005109.2) (Leu72-Leu251) was expressed with the Fc region of rabbit IgG at the N-terminus..

Source: Human

Expression Host: HEK293 Cells

QC Testing

Purity: > 90 % as determined by SDS-PAGE.

Bio Activity:

Measured by its ability to induce apoptosis of TF1 human erythroleukemic cells. The ED_{50} for this effect is typically 20-120 ng/mL.

Endotoxin:

< 1.0 EU per μ g protein as determined by the LAL method.

Stability:

Samples are stable for up to twelve months from date of receipt at -70 °C

Predicted N terminal: Ser

Molecular Mass:

The recombinant human TNFSF15 consists of 431 amino acids and predicts a molecular mass of 48 kDa.

Formulation:

Lyophilized from sterile PBS, pH 7.4.

Normally 5 % - 8 % trehalose, mannitol and 0.01% Tween80 are added as protectants before lyophilization. Specific concentrations are included in the hardcopy of COA. Please contact us for any concerns or special requirements.

Usage Guide

Storage:

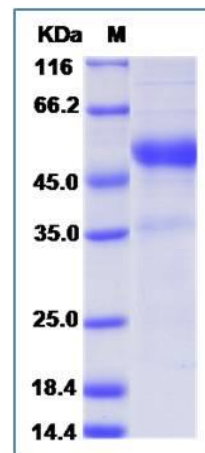
Store it under sterile conditions at -20°C to -80°C upon receiving. Recommend to aliquot the protein into smaller quantities for optimal storage.

Avoid repeated freeze-thaw cycles.

Reconstitution:

Detailed reconstitution instructions are sent along with the products.

SDS-PAGE:



Protein Description

TL1A, also known as TNFSF15, is a cytokine that belongs to the tumor necrosis factor (TNF) ligand family. It is specifically expressed in endothelial cells. TL1A also can be detected in monocytes, placenta, lung, liver, kidney, skeletal muscle, pancreas, spleen, prostate, small intestine and colon. TL1A is a ligand for receptor TNFRSF25 and decoy receptor TNFRSF21/DR6. It mediates activation of NF-kappa-B. It also inhibits vascular endothelial growth and angiogenesis (in vitro). TL1A promotes activation of caspases and apoptosis. It is also found to inhibit endothelial cell proliferation, and thus may function as an angiogenesis inhibitor.

References

1. Jin T, *et al.* (2007) X-ray crystal structure of TNF ligand family member TL1A at 2.1 Å. *Biochem Biophys Res Commun.* 364(1):1-6.
2. Cassatella MA, *et al.* (2007) Soluble TNF-like cytokine (TL1A) production by immune complexes stimulated monocytes in rheumatoid arthritis. *J Immunol.* 178(11):7325-33.
3. Prehn JL, *et al.* (2007) The T cell costimulator TL1A is induced by FcγR signaling in human monocytes and dendritic cells. *J Immunol.* 178(7):4033-8.

Manufactured By Sino Biological Inc., FOR RESEARCH USE ONLY. NOT FOR USE IN HUMANS.

For US Customer: Fax: 267-657-0217

● Tel: 215-583-7898

Global Customer: Fax :+86-10-5862-8288

● Tel:+86-400-890-9989 ●

<http://www.sinobiological.com>