

HAND1 Antibody, Rabbit PAb, Antigen Affinity Purified



Sino Biological
Biological Solution Specialist

Catalog Number: 200061-T38

GENERAL INFORMATION

Immunogen:	E. coli-derived Human HAND1 fragment
Preparation	Produced in rabbits immunized with E. coli-derived Human HAND1 fragment, and purified by antigen affinity chromatography.
Ig Type:	Rabbit IgG
Specificity:	Human HAND1
Formulation:	PBS, pH7.0 with 0.03% Proclin300
Storage:	This antibody can be stored at 2°C-8°C for one month without detectable loss of activity. Antibody products are stable for twelve months from date of receipt when stored at -20°C to -80°C. Avoid repeated freeze-thaw cycles.
Alternative Names:	HAND1

APPLICATIONS

Applications:	WB, ICC/IF, IP
---------------	----------------

RECOMMENDED CONCENTRATION

ICC/IF	ICC/IF: 1:500-1:2500
Western Blot	WB: 1:500-1:1000
Immunoprecipitation	IP:0.2-1μL/mg of lysate

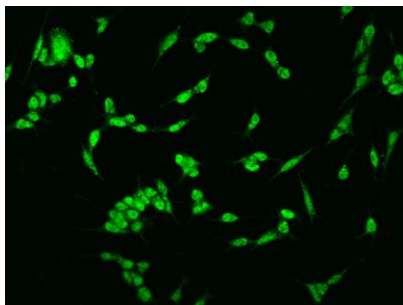
Please Note: Optimal concentrations/dilutions should be determined by the end user.

HAND1 Antibody, Rabbit PAb, Antigen Affinity Purified

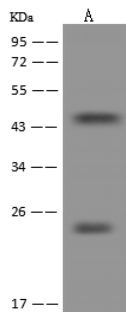


Sino Biological
Biological Solution Specialist

Catalog Number: 200061-T38



Immunofluorescence staining of HAND1 in SHSY5Y cells. Cells were fixed with 4% PFA, permeabilized with 0.1% Triton X-100 in PBS, blocked with 10% serum, and incubated with rabbit anti-Human HAND1 polyclonal antibody (dilution ratio 1:1000) at 4°C overnight. Then cells were stained with the Alexa Fluor®488-conjugated Goat Anti-rabbit IgG secondary antibody (green). Positive staining was localized to Nucleus.

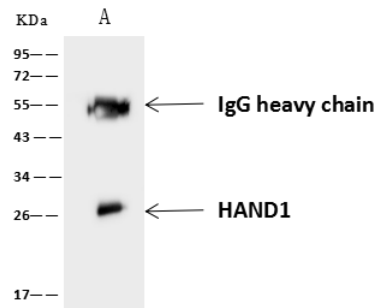


Anti-HAND1 rabbit polyclonal antibody at 1:500 dilution
Lane A: Mouse liver tissue lysate

Lysates/proteins at 30 µg per lane.
Secondary
Goat Anti-Rabbit IgG (H+L)/HRP at 1/10000 dilution.

Developed using the ECL technique.
Performed under reducing conditions.

Predicted band size: 25.8 kDa
Observed band size: 25 kDa



HAND1 was immunoprecipitated using:
Lane A: 0.5 mg Mouse liver Whole Cell Lysate

1 µL anti-HAND1 rabbit polyclonal antibody and 60 µg of Immunomagnetic beads Protein A/G.

Primary antibody:
Anti-HAND1 rabbit polyclonal antibody, at 1:500 dilution

Secondary antibody:
Goat Anti-Rabbit IgG (H+L)/HRP at 1/10000 dilution

Developed using the ECL technique.
Performed under reducing conditions.

Predicted band size: 25 kDa
Observed band size: 26 kDa