

ATP6V1C2 Antibody, Rabbit PAb, Antigen Affinity Purified



Sino Biological
Biological Solution Specialist

Catalog Number: 200458-T32

GENERAL INFORMATION

Immunogen:	E. coli-derived Human ATP6V1C2 fragment
Preparation	Produced in rabbits immunized with E. coli-derived Human ATP6V1C2 fragment, and purified by antigen affinity chromatography.
Ig Type:	Rabbit IgG
Specificity:	Human ATP6V1C2
Formulation:	PBS, pH7.0 with 0.03% Proclin300
Storage:	This antibody can be stored at 2°C-8°C for one month without detectable loss of activity. Antibody products are stable for twelve months from date of receipt when stored at -20°C to -80°C. Avoid repeated freeze-thaw cycles.
Alternative Names:	ATP6V1C2

APPLICATIONS

Applications:	WB
---------------	----

RECOMMENDED CONCENTRATION

Western Blot	WB: 1:500-1:2000
--------------	------------------

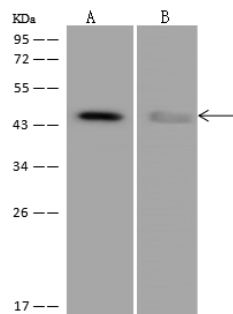
Please Note: Optimal concentrations/dilutions should be determined by the end user.

ATP6V1C2 Antibody, Rabbit PAb, Antigen Affinity Purified



Sino Biological
Biological Solution Specialist

Catalog Number: 200458-T32



Anti-ATP6V1C2 rabbit polyclonal antibody at
1:500 dilution

Lane A: HT29 Whole Cell Lysate

Lane B: MCF7 Whole Cell Lysate

Lysates/proteins at 30 µg per lane.

Secondary

Goat Anti-Rabbit IgG (H+L)/HRP at 1/10000
dilution.

Developed using the ECL technique.

Performed under reducing conditions.

Predicted band size: 48 kDa

Observed band size: 48 kDa