

GLMN / Glomulin Antibody, Rabbit PAb, Antigen Affinity Purified



Sino Biological
Biological Solution Specialist

Catalog Number: 200564-T08

GENERAL INFORMATION

Immunogen:	E. coli-derived Human GLMN / Glomulin fragment
Preparation	Produced in rabbits immunized with E. coli-derived Human GLMN / Glomulin fragment, and purified by antigen affinity chromatography.
Ig Type:	Rabbit IgG
Specificity:	Human GLMN / Glomulin
Formulation:	PBS, pH7.0 with 0.03% Proclin300
Storage:	This antibody can be stored at 2°C-8°C for one month without detectable loss of activity. Antibody products are stable for twelve months from date of receipt when stored at -20°C to -80°C. Avoid repeated freeze-thaw cycles.

APPLICATIONS

Applications:	IHC-P
---------------	-------

RECOMMENDED CONCENTRATION

IHC-P	IHC-P: 1:50-1:200
-------	-------------------

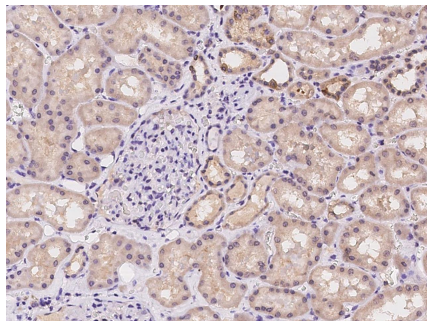
Please Note: Optimal concentrations/dilutions should be determined by the end user.

GLMN / Glomulin Antibody, Rabbit PAb, Antigen Affinity Purified

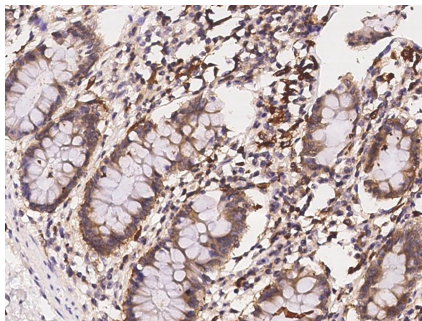


Sino Biological
Biological Solution Specialist

Catalog Number: 200564-T08



Immunochemical staining of human GLMN in human kidney with rabbit polyclonal antibody at 1:100 dilution, formalin-fixed paraffin embedded sections.



Immunochemical staining of human GLMN in human rectum with rabbit polyclonal antibody at 1:100 dilution, formalin-fixed paraffin embedded sections.