

Cystatin B Antibody, Rabbit PAb, Antigen Affinity Purified



Sino Biological
Biological Solution Specialist

Catalog Number: 200660-T44

GENERAL INFORMATION

Immunogen:	E. coli-derived Human Cystatin B fragment
Preparation	Produced in rabbits immunized with E. coli-derived Human Cystatin B fragment, and purified by antigen affinity chromatography.
Ig Type:	Rabbit IgG
Specificity:	Human Cystatin B
Formulation:	PBS, pH7.0 with 0.03% Proclin300
Storage:	This antibody can be stored at 2°C-8°C for one month without detectable loss of activity. Antibody products are stable for twelve months from date of receipt when stored at -20°C to -80°C. Avoid repeated freeze-thaw cycles.
Alternative Names:	CSTB

APPLICATIONS

Applications:	WB, IHC-P, IP
---------------	---------------

RECOMMENDED CONCENTRATION

IHC-P	IHC-P: 1:500-1:10000
Western Blot	WB: 1:500-1:2000
Immunoprecipitation	IP: 1-5µL/mg of lysate

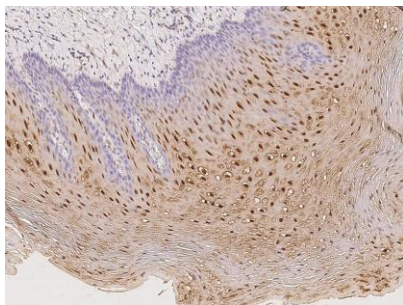
Please Note: Optimal concentrations/dilutions should be determined by the end user.

Cystatin B Antibody, Rabbit PAb, Antigen Affinity Purified

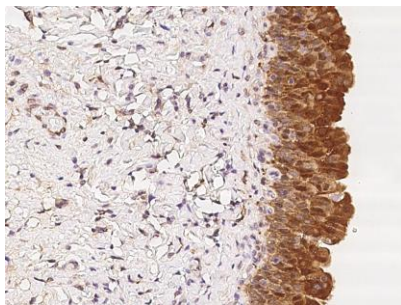


Sino Biological
Biological Solution Specialist

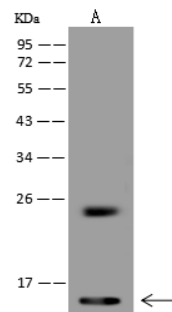
Catalog Number: 200660-T44



Immunohistochemical staining of human CSTB in human esophagus with rabbit polyclonal antibody at 1:5000 dilution, formalin-fixed paraffin embedded sections.



Immunohistochemical staining of human CSTB in human urinary bladder with rabbit polyclonal antibody at 1:1000 dilution, formalin-fixed paraffin embedded sections.

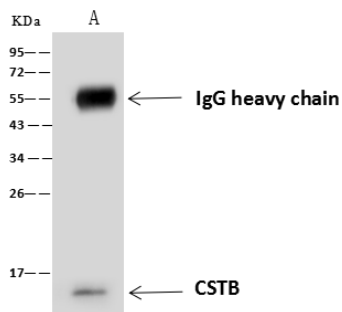


Anti-CSTB rabbit polyclonal antibody at 1:500 dilution
Lane A: U87-MG Whole Cell Lysate

Lysates/proteins at 30 µg per lane.
Secondary
Goat Anti-Rabbit IgG (H+L)/HRP at 1/10000 dilution.

Developed using the ECL technique.
Performed under reducing conditions.

Predicted band size: 11 kDa
Observed band size: 11 kDa
(We are unsure as to the identity of these extra bands.)



CSTB was immunoprecipitated using:
Lane A: 0.5 mg U87-MG Whole Cell Lysate

4 µL anti-CSTB rabbit polyclonal antibody and
60 µg of Immunomagnetic beads Protein A/G.

Primary antibody:
Anti-CSTB rabbit polyclonal antibody, at 1:100 dilution

Secondary antibody:
Goat Anti-Rabbit IgG (H+L)/HRP at 1/10000 dilution

Developed using the ECL technique.
Performed under reducing conditions.

Predicted band size: 11 kDa
Observed band size: 11 kDa