

SAR1A Antibody, Rabbit PAb, Antigen Affinity Purified



Sino Biological
Biological Solution Specialist

Catalog Number: 200750-T36

GENERAL INFORMATION

| | |
|---------------------------|---|
| Immunogen: | E. coli-derived Human SAR1A fragment |
| Preparation | Produced in rabbits immunized with E. coli-derived Human SAR1A fragment, and purified by antigen affinity chromatography. |
| Ig Type: | Rabbit IgG |
| Specificity: | Human SAR1A |
| Formulation: | PBS, pH7.0 with 0.03% Proclin300 |
| Storage: | This antibody can be stored at 2°C-8°C for one month without detectable loss of activity. Antibody products are stable for twelve months from date of receipt when stored at -20°C to -80°C. Avoid repeated freeze-thaw cycles. |
| Alternative Names: | SAR1A |

APPLICATIONS

| | |
|----------------------|--------|
| Applications: | WB, IP |
|----------------------|--------|

RECOMMENDED CONCENTRATION

| | |
|----------------------------|-----------------------|
| Western Blot | WB: 1:500-1:2000 |
| Immunoprecipitation | IP:1-5μL/mg of lysate |

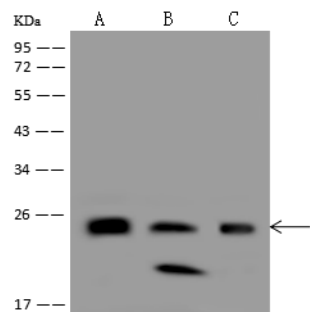
Please Note: Optimal concentrations/dilutions should be determined by the end user.

SAR1A Antibody, Rabbit PAb, Antigen Affinity Purified



Sino Biological
Biological Solution Specialist

Catalog Number: 200750-T36



Anti-SAR1A rabbit polyclonal antibody at 1:500 dilution

Lane A: 293T Whole Cell Lysate
Lane B: A431 Whole Cell Lysate
Lane C: 293 Whole Cell Lysate

Lysates/proteins at 30 µg per lane.

Secondary

Goat Anti-Rabbit IgG (H+L)/HRP at 1/10000 dilution.

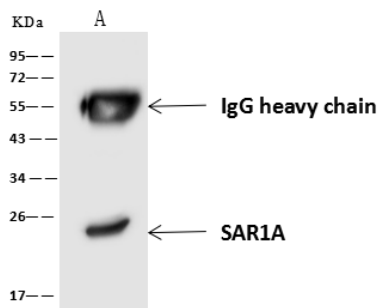
Developed using the ECL technique.

Performed under reducing conditions.

Predicted band size: 22 kDa

Observed band size: 25 kDa

(We are unsure as to the identity of these extra bands.)



SAR1A was immunoprecipitated using:

Lane A: 0.5 mg 293T Whole Cell Lysate

4 µL anti-SAR1A rabbit polyclonal antibody
and 60 µg of Immunomagnetic beads Protein A/G.

Primary antibody:

Anti-SAR1A rabbit polyclonal antibody, at 1:100 dilution

Secondary antibody:

Goat Anti-Rabbit IgG (H+L)/HRP at 1/10000 dilution

Developed using the ECL technique.

Performed under reducing conditions.

Predicted band size: 22 kDa

Observed band size: 25 kDa

For Research Use Only. Not for use in diagnostic or therapeutic procedures.

Tel: +86-400-890-9989 (Global), +1-215-583-7898 (USA), +49(0)6196 9678656 (Europe)

Website: <http://www.sinobiological.com>