

PSMB1 Antibody, Rabbit PAb, Antigen Affinity Purified



Sino Biological
Biological Solution Specialist

Catalog Number: 200790-T44

GENERAL INFORMATION

Immunogen:	E. coli-derived Human PSMB1 fragment
Preparation	Produced in rabbits immunized with E. coli-derived Human PSMB1 fragment, and purified by antigen affinity chromatography.
Ig Type:	Rabbit IgG
Specificity:	Human PSMB1
Formulation:	PBS, pH7.0 with 0.03% Proclin300
Storage:	This antibody can be stored at 2°C-8°C for one month without detectable loss of activity. Antibody products are stable for twelve months from date of receipt when stored at -20°C to -80°C. Avoid repeated freeze-thaw cycles.
Alternative Names:	PSMB1

APPLICATIONS

Applications:	WB, IHC-P, IP
----------------------	---------------

RECOMMENDED CONCENTRATION

IHC-P	IHC-P: 1:500-1:2000
Western Blot	WB: 1:500-1:2000
Immunoprecipitation	IP: 1-5µL/mg of lysate

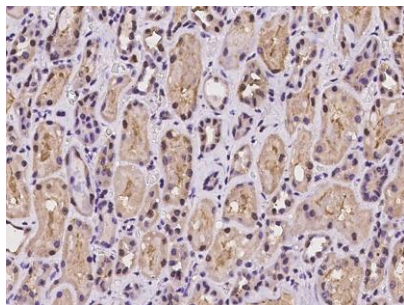
Please Note: Optimal concentrations/dilutions should be determined by the end user.

PSMB1 Antibody, Rabbit PAb, Antigen Affinity Purified

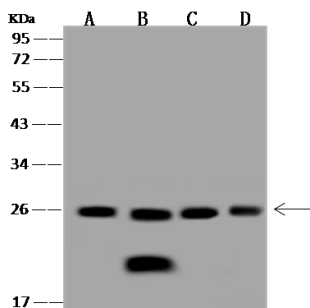
Catalog Number: 200790-T44



Sino Biological
Biological Solution Specialist



Immunohistochemical staining of human PSMB1 in human kidney with rabbit polyclonal antibody at 1:1000 dilution, formalin-fixed paraffin embedded sections.



Anti-PSMB1 rabbit polyclonal antibody at 1:500 dilution

Lane A: MCF7 Whole Cell Lysate
Lane B: HL60 Whole Cell Lysate
Lane C: SW480 Whole Cell Lysate
Lane D: K562 Whole Cell Lysate

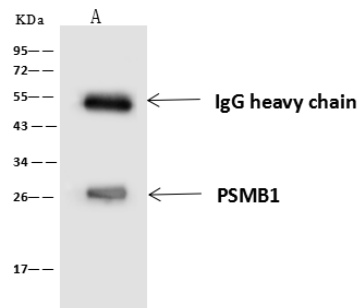
Lysates/proteins at 30 µg per lane.

Secondary

Goat Anti-Rabbit IgG (H+L)/HRP at 1/10000 dilution.

Developed using the ECL technique.
Performed under reducing conditions.

Predicted band size: 26 kDa
Observed band size: 26 kDa



PSMB1 was immunoprecipitated using:
Lane A: 0.5 mg HL60 Whole Cell Lysate

4 µL anti-PSMB1 rabbit polyclonal antibody
and 60 µg of Immunomagnetic beads Protein
A/G.

Primary antibody:

Anti-PSMB1 rabbit polyclonal antibody, at
1:100 dilution

Secondary antibody:

Goat Anti-Rabbit IgG (H+L)/HRP at 1/10000
dilution

Developed using the ECL technique.
Performed under reducing conditions.

Predicted band size: 26 kDa
Observed band size: 26 kDa