

# PLA2G4F Antibody, Rabbit PAb, Antigen Affinity Purified



Sino Biological  
Biological Solution Specialist

Catalog Number: 200820-T10

## GENERAL INFORMATION

|                    |  |
|--------------------|--|
| Immunogen:         | E. coli-derived Human PLA2G4F fragment   |
| Preparation        | Produced in rabbits immunized with E. coli-derived Human PLA2G4F fragment, and purified by antigen affinity chromatography.  |
| Ig Type:           | Rabbit IgG   |
| Specificity:       | Human PLA2G4F  |
| Formulation:       | PBS, pH7.0 with 0.03% Proclin300   |
| Storage:           | This antibody can be stored at 2°C-8°C for one month without detectable loss of activity. Antibody products are stable for twelve months from date of receipt when stored at -20°C to -80°C. Preservative-Free. Avoid repeated freeze-thaw cycles. |
| Alternative Names: | PLA2G4FZ   |

## APPLICATIONS

|               |               |
|---------------|---------------|
| Applications: | IHC-P, ICC/IF |
|---------------|---------------|

## RECOMMENDED CONCENTRATION

|        |                     |
|--------|---------------------|
| IHC-P  | IHC-P: 1:50-1:200   |
| ICC/IF | ICC/IF: 1:100-1:500 |

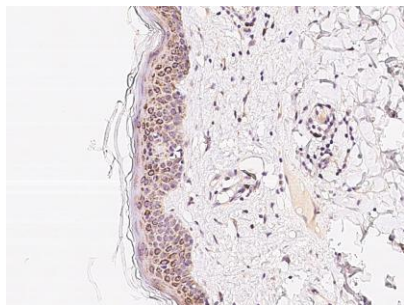
***Please Note: Optimal concentrations/dilutions should be determined by the end user.***

# PLA2G4F Antibody, Rabbit PAb, Antigen Affinity Purified

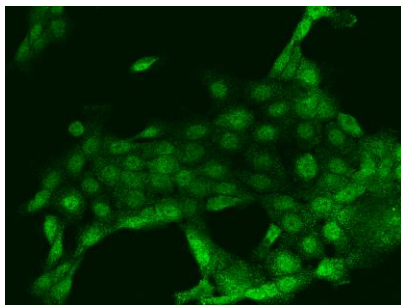
Catalog Number: 200820-T10



Sino Biological  
Biological Solution Specialist



Immunochemical staining of human PLA2G4F in human skin with rabbit polyclonal antibody at 1:100 dilution, formalin-fixed paraffin embedded sections.



Immunofluorescence staining of PLA2G4F in A431 cells. Cells were fixed with 4% PFA, permeabilized with 0.1% Triton X-100 in PBS, blocked with 10% serum, and incubated with rabbit anti-Human PLA2G4F polyclonal antibody (dilution ratio 1:200) at 4°C overnight. Then cells were stained with the Alexa Fluor®488-conjugated Goat Anti-rabbit IgG secondary antibody (green). Positive staining was localized to Nucleus and Cytoplasm.