

# SNW1 Antibody, Rabbit PAb, Antigen Affinity Purified



Sino Biological  
Biological Solution Specialist

Catalog Number: 201060-T36

## GENERAL INFORMATION

Immunogen:	E. coli-derived Human SNW1 fragment
Preparation	Produced in rabbits immunized with E. coli-derived Human SNW1 fragment, and purified by antigen affinity chromatography.
Ig Type:	Rabbit IgG
Specificity:	Human SNW1
Formulation:	PBS, pH7.0 with 0.03% Proclin300
Storage:	This antibody can be stored at 2°C-8°C for one month without detectable loss of activity. Antibody products are stable for twelve months from date of receipt when stored at -20°C to -80°C. Avoid repeated freeze-thaw cycles.
Alternative Names:	SNW1

## APPLICATIONS

Applications:	WB, IP
---------------	--------

## RECOMMENDED CONCENTRATION

Western Blot	WB: 1:500-1:2000
Immunoprecipitation	IP:1-5μL/mg of lysate

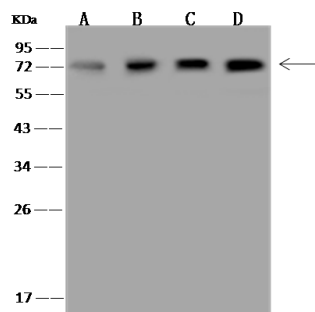
**Please Note: Optimal concentrations/dilutions should be determined by the end user.**

# SNW1 Antibody, Rabbit PAb, Antigen Affinity Purified



Sino Biological  
Biological Solution Specialist

Catalog Number: 201060-T36



Anti-SNW1 rabbit polyclonal antibody at 1:500 dilution

Lane A: HeLa Whole Cell Lysate  
Lane B: HEK293 Whole Cell Lysate  
Lane C: HepG2 Whole Cell Lysate  
Lane D: Jurkat Whole Cell Lysate

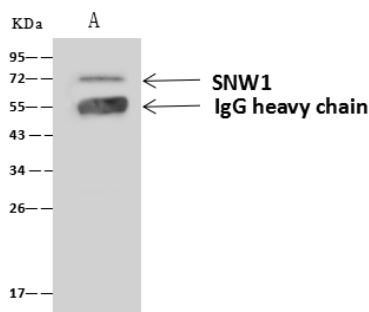
Lysates/proteins at 30 µg per lane.

Secondary

Goat Anti-Rabbit IgG (H+L)/HRP at 1/10000 dilution.

Developed using the ECL technique.  
Performed under reducing conditions.

Predicted band size: 61 kDa  
Observed band size: 72 kDa



SNW1 was immunoprecipitated using:  
Lane A: 0.5 mg Jurkat Whole Cell Lysate

4 µL anti-SNW1 rabbit polyclonal antibody and  
60 µg of Immunomagnetic beads Protein A/G.

Primary antibody:

Anti-SNW1 rabbit polyclonal antibody, at 1:100 dilution

Secondary antibody:

Goat Anti-Rabbit IgG (H+L)/HRP at 1/10000 dilution

Developed using the ECL technique.  
Performed under reducing conditions.

Predicted band size: 61 kDa  
Observed band size: 72 kDa