

BLMH Antibody, Rabbit PAb, Antigen Affinity Purified



Sino Biological
Biological Solution Specialist

Catalog Number: 201156-T32

GENERAL INFORMATION

Immunogen:	E. coli-derived Human BLMH fragment
Preparation	Produced in rabbits immunized with E. coli-derived Human BLMH fragment, and purified by antigen affinity chromatography.
Ig Type:	Rabbit IgG
Specificity:	Human BLMH
Formulation:	PBS, pH7.0 with 0.03% Proclin300
Storage:	This antibody can be stored at 2°C-8°C for one month without detectable loss of activity. Antibody products are stable for twelve months from date of receipt when stored at -20°C to -80°C. Avoid repeated freeze-thaw cycles.
Alternative Names:	BLMH

APPLICATIONS

Applications:	WB
---------------	----

RECOMMENDED CONCENTRATION

Western Blot	WB: 1:500-1:2000
--------------	------------------

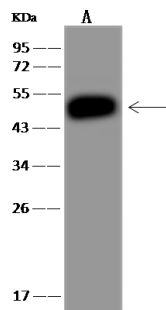
Please Note: Optimal concentrations/dilutions should be determined by the end user.

BLMH Antibody, Rabbit PAb, Antigen Affinity Purified



Sino Biological
Biological Solution Specialist

Catalog Number: 201156-T32



Anti-BLMH rabbit polyclonal antibody at 1:500 dilution
Lane A: HL-60 Whole Cell Lysate

Lysates/proteins at 30 µg per lane.
Secondary
Goat Anti-Rabbit IgG (H+L)/HRP at 1/10000 dilution.

Developed using the ECL technique.
Performed under reducing conditions.

Predicted band size: 53 kDa
Observed band size: 53 kDa