

# MAD2L1 Antibody, Rabbit PAb, Antigen Affinity Purified



Sino Biological  
Biological Solution Specialist

Catalog Number: 201176-T46

## GENERAL INFORMATION

<b>Immunogen:</b>	E. coli-derived Human MAD2L1 fragment
<b>Preparation</b>	Produced in rabbits immunized with E. coli-derived Human MAD2L1 fragment, and purified by antigen affinity chromatography.
<b>Ig Type:</b>	Rabbit IgG
<b>Specificity:</b>	Human MAD2L1
<b>Formulation:</b>	PBS, pH7.0 with 0.03% Proclin300
<b>Storage:</b>	This antibody can be stored at 2°C-8°C for one month without detectable loss of activity. Antibody products are stable for twelve months from date of receipt when stored at -20°C to -80°C. Preservative-Free. Avoid repeated freeze-thaw cycles.
<b>Alternative Names:</b>	MAD2L1

## APPLICATIONS

<b>Applications:</b>	WB,IHC-P,ICC/IF,IP
----------------------	--------------------

## RECOMMENDED CONCENTRATION

<b>IHC-P</b>	IHC-P: 1:50-1:200
<b>ICC/IF</b>	ICC/IF: 1:100-1:500
<b>Western Blot</b>	WB: 1:500-1:2000
<b>Immunoprecipitation</b>	IP:1-5μL/mg of lysate

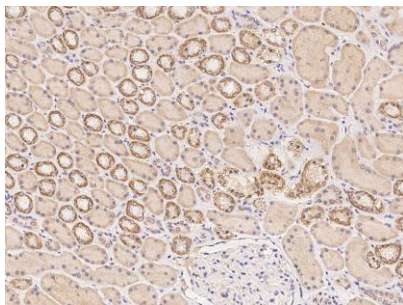
**Please Note:** Optimal concentrations/dilutions should be determined by the end user.

# MAD2L1 Antibody, Rabbit PAb, Antigen Affinity Purified

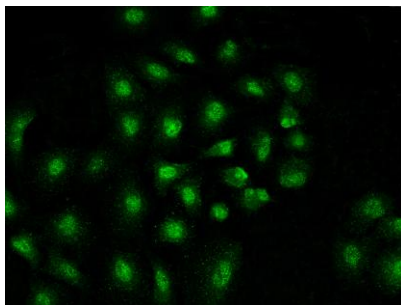


Sino Biological  
Biological Solution Specialist

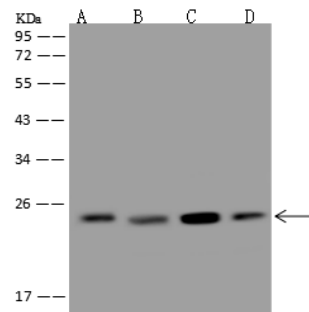
Catalog Number: 201176-T46



Immunohistochemical staining of human MAD2L1 in human kidney with rabbit polyclonal antibody at 1:100 dilution, formalin-fixed paraffin embedded sections.



Immunofluorescence staining of MAD2L1 in A549 cells. Cells were fixed with 4% PFA, permeabilized with 0.3% Triton X-100 in PBS, blocked with 10% serum, and incubated with rabbit anti-human MAD2L1 polyclonal antibody (dilution ratio 1:200) at 4°C overnight. Then cells were stained with the Alexa Fluor®488-conjugated Goat Anti-rabbit IgG secondary antibody (green). Positive staining was localized to Nucleus.



Anti-MAD2L1 rabbit polyclonal antibody at 1:500 dilution

Lane A: HeLa Whole Cell Lysate

Lane B: A431 Whole Cell Lysate

Lane C: Jurkat Whole Cell Lysate

Lane D: HepG2 Whole Cell Lysate

Lysates/proteins at 30 µg per lane.

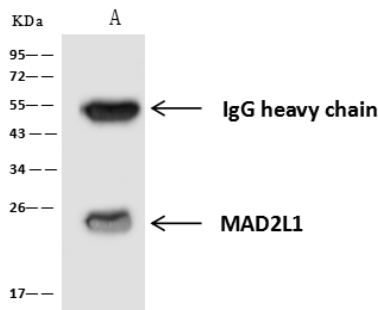
Secondary

Goat Anti-Rabbit IgG (H+L)/HRP at 1/10000 dilution.

Developed using the ECL technique. Performed under reducing conditions.

Predicted band size: 24 kDa

Observed band size: 24 kDa



MAD2L1 was immunoprecipitated using:  
Lane A: 0.5 mg Jurkat Whole Cell Lysate

4 µL anti-MAD2L1 rabbit polyclonal antibody  
and 60 µg of Immunomagnetic beads Protein  
A/G. Primary antibody:

Anti-MAD2L1 rabbit polyclonal antibody, at  
1:100 dilution

Secondary antibody:  
Goat Anti-Rabbit IgG (H+L)/HRP at 1/10000  
dilution

Developed using the ECL technique.  
Performed under reducing conditions.

Predicted band size: 24 kDa

Observed band size: 24 kDa

Manufactured By Sino Biological Inc., FOR RESEARCH USE ONLY. NOT FOR USE IN HUMANS.

Tel: 215-583-7898 (US); +86-400-890-9989 (Global) •

<http://www.sinobiological.com>