

# SIRT6 Antibody, Rabbit PAb, Antigen Affinity Purified



Sino Biological  
Biological Solution Specialist

Catalog Number: 201203-T38

## GENERAL INFORMATION

Immunogen:	E. coli-derived Human SIRT6 fragment
Preparation	Produced in rabbits immunized with E. coli-derived Human SIRT6 fragment, and purified by antigen affinity chromatography.
Ig Type:	Rabbit IgG
Specificity:	Human SIRT6
Formulation:	PBS, pH7.0 with 0.03% Proclin300
Storage:	This antibody can be stored at 2°C-8°C for one month without detectable loss of activity. Antibody products are stable for twelve months from date of receipt when stored at -20°C to -80°C. Avoid repeated freeze-thaw cycles.
Alternative Names:	SIRT6

## APPLICATIONS

Applications:	WB, ICC/IF, IP
---------------	----------------

## RECOMMENDED CONCENTRATION

ICC/IF	ICC/IF: 1:100-1:500
Western Blot	WB: 1:500-1:2000
Immunoprecipitation	IP:1-5µL/mg of lysate

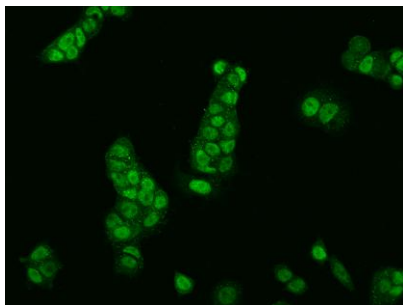
**Please Note:** Optimal concentrations/dilutions should be determined by the end user.

# SIRT6 Antibody, Rabbit PAb, Antigen Affinity Purified

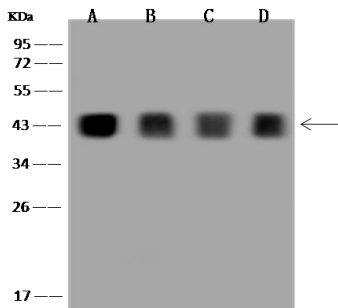
Catalog Number: 201203-T38



Sino Biological  
Biological Solution Specialist



Immunofluorescence staining of SIRT6 in MCF7 cells. Cells were fixed with 4% PFA, permeabilized with 0.1% Triton X-100 in PBS, blocked with 10% serum, and incubated with rabbit anti-Human SIRT6 polyclonal antibody (dilution ratio 1:200) at 4°C overnight. Then cells were stained with the Alexa Fluor®488-conjugated Goat Anti-rabbit IgG secondary antibody (green). Positive staining was localized to Nucleus.



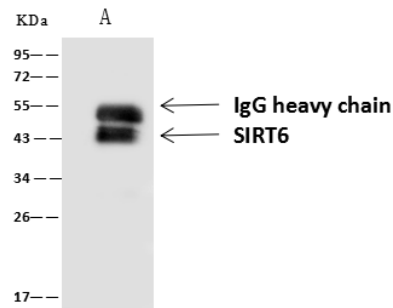
Anti-SIRT6 rabbit polyclonal antibody at 1:500 dilution

Lane A: HeLa Whole Cell Lysate  
Lane B: 293T Whole Cell Lysate  
Lane C: U2OS Whole Cell Lysate  
Lane D: HepG2 Whole Cell Lysate

Lysates/proteins at 30 µg per lane.  
Secondary  
Goat Anti-Rabbit IgG (H+L)/HRP at 1/10000 dilution.

Developed using the ECL technique.  
Performed under reducing conditions.

Predicted band size: 39 kDa  
Observed band size: 43 kDa



SIRT6 was immunoprecipitated using:  
Lane A: 0.5 mg HeLa Whole Cell Lysate

4 µL anti-SIRT6 rabbit polyclonal antibody and  
60 µg of Immunomagnetic beads Protein A/G.

Primary antibody:  
Anti-SIRT6 rabbit polyclonal antibody, at 1:100 dilution

Secondary antibody:  
Goat Anti-Rabbit IgG (H+L)/HRP at 1/10000 dilution

Developed using the ECL technique.  
Performed under reducing conditions.

Predicted band size: 39 kDa  
Observed band size: 43 kDa