

# SOD1 Antibody, Rabbit PAb, Antigen Affinity Purified



Sino Biological  
Biological Solution Specialist

Catalog Number: 201220-T36

## GENERAL INFORMATION

|                    |   |
|--------------------|---|
| Immunogen:         | E. coli-derived Human SOD1 fragment   |
| Preparation        | Produced in rabbits immunized with E. coli-derived Human SOD1 fragment, and purified by antigen affinity chromatography.  |
| Ig Type:           | Rabbit IgG  |
| Specificity:       | Human SOD1  |
| Formulation:       | PBS, pH7.0 with 0.03% Proclin300  |
| Storage:           | This antibody can be stored at 2°C-8°C for one month without detectable loss of activity. Antibody products are stable for twelve months from date of receipt when stored at -20°C to -80°C. Avoid repeated freeze-thaw cycles. |
| Alternative Names: | SOD1  |

## APPLICATIONS

|               |        |
|---------------|--------|
| Applications: | WB, IP |
|---------------|--------|

## RECOMMENDED CONCENTRATION

|                     |                       |
|---------------------|-----------------------|
| Western Blot        | WB: 1:500-1:2000      |
| Immunoprecipitation | IP:1-5μL/mg of lysate |

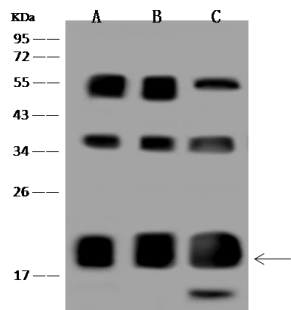
**Please Note: Optimal concentrations/dilutions should be determined by the end user.**

# SOD1 Antibody, Rabbit PAb, Antigen Affinity Purified



Sino Biological  
Biological Solution Specialist

Catalog Number: 201220-T36



Anti-SOD1 rabbit polyclonal antibody at 1:500 dilution

Lane A: HeLa Whole Cell Lysate

Lane B: 293T Whole Cell Lysate

Lane C: Jurkat Whole Cell Lysate

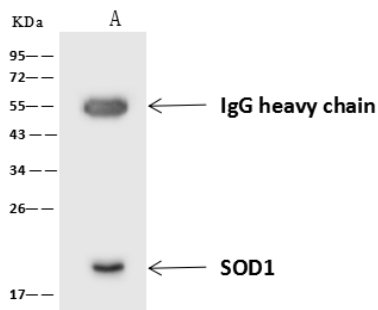
Lysates/proteins at 30 µg per lane.

Secondary

Goat Anti-Rabbit IgG (H+L)/HRP at 1/10000 dilution.

Developed using the ECL technique.  
Performed under reducing conditions.

Predicted band size: 16 kDa  
Observed band size: 18 kDa



SOD1 was immunoprecipitated using:

Lane A: 0.5 mg Jurkat Whole Cell Lysate

4 µL anti-SOD1 rabbit polyclonal antibody and  
60 µg of Immunomagnetic beads Protein A/G.

Primary antibody:

Anti-SOD1 rabbit polyclonal antibody, at 1:100 dilution

Secondary antibody:

Goat Anti-Rabbit IgG (H+L)/HRP at 1/10000 dilution

Developed using the ECL technique.  
Performed under reducing conditions.

Predicted band size: 20 kDa  
Observed band size: 20 kDa