

Nestin/NES Antibody, Rabbit PAb, Antigen Affinity Purified



Sino Biological
Biological Solution Specialist

Catalog Number: 201414-T10

GENERAL INFORMATION

Immunogen:	E. coli-derived Human Nestin/NES fragment
Preparation	Produced in rabbits immunized with E. coli-derived Human Nestin/NES fragment, and purified by antigen affinity chromatography.
Ig Type:	Rabbit IgG
Specificity:	Human Nestin/NES
Formulation:	PBS, pH7.0 with 0.03% Proclin300
Storage:	This antibody can be stored at 2°C-8°C for one month without detectable loss of activity. Antibody products are stable for twelve months from date of receipt when stored at -20°C to -80°C. Preservative-Free. Avoid repeated freeze-thaw cycles.
Alternative Names:	Nbla00170

APPLICATIONS

Applications: IHC-P, ICC/IF

RECOMMENDED CONCENTRATION

IHC-P	IHC-P: 1:1000-1:10000
ICC/IF	ICC/IF: 1:100-1:500

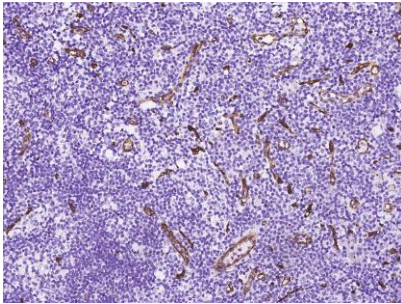
Please Note: Optimal concentrations/dilutions should be determined by the end user.

Nestin/NES Antibody, Rabbit PAb, Antigen Affinity Purified

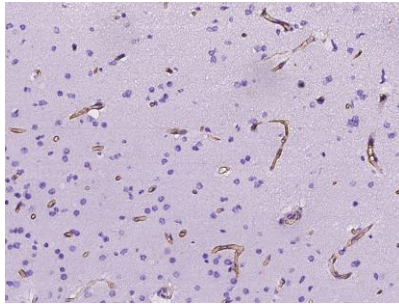


Sino Biological
Biological Solution Specialist

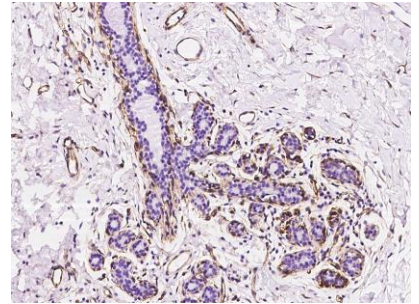
Catalog Number: 201414-T10



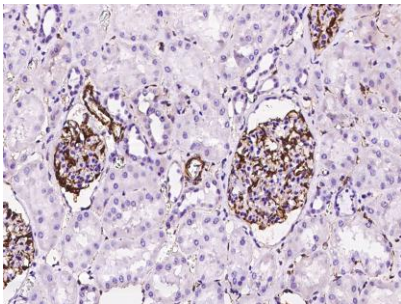
Immunohistochemical staining of human NES in human lymph node with rabbit polyclonal antibody at 1:5000 dilution, formalin-fixed paraffin embedded sections.



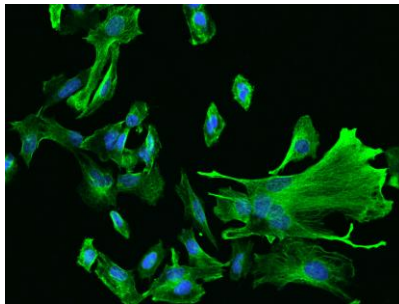
Immunohistochemical staining of human NES in human glioma with rabbit polyclonal antibody at 1:5000 dilution, formalin-fixed paraffin embedded sections.



Immunohistochemical staining of human NES in human breast with rabbit polyclonal antibody at 1:5000 dilution, formalin-fixed paraffin embedded sections.



Immunohistochemical staining of human NES in human kidney with rabbit polyclonal antibody at 1:5000 dilution, formalin-fixed paraffin embedded sections.



Immunofluorescence staining of NES in U251MG cells. Cells were fixed with 4% PFA, permeabilized with 0.1% Triton X-100 in PBS, blocked with 10% serum, and incubated with rabbit anti-Human NES-1 polyclonal antibody (dilution ratio 1:200) at 4°C overnight. Then cells were stained with the Alexa Fluor 488-conjugated Goat Anti-rabbit IgG secondary antibody (green) and counterstained with DAPI (blue). Positive staining was localized to Cytoplasm.