

14-3-3 sigma Antibody, Rabbit PAb, Antigen Affinity Purified



Sino Biological
Biological Solution Specialist

Catalog Number: 201443-T42

GENERAL INFORMATION

Immunogen:	E. coli-derived Human 14-3-3 sigma fragment
Preparation	Produced in rabbits immunized with E. coli-derived Human 14-3-3 sigma fragment, and purified by antigen affinity chromatography.
Ig Type:	Rabbit IgG
Specificity:	Human 14-3-3 sigma
Formulation:	PBS, pH7.0 with 0.03% Proclin300
Storage:	This antibody can be stored at 2°C-8°C for one month without detectable loss of activity. Antibody products are stable for twelve months from date of receipt when stored at -20°C to -80°C. Avoid repeated freeze-thaw cycles.
Alternative Names:	SFN

APPLICATIONS

Applications:	WB, IHC-P, ICC/IF
----------------------	-------------------

RECOMMENDED CONCENTRATION

IHC-P	IHC-P: 1:200-1:2000
ICC/IF	ICC/IF: 1:100-1:500
Western Blot	WB: 1:500-1:2000

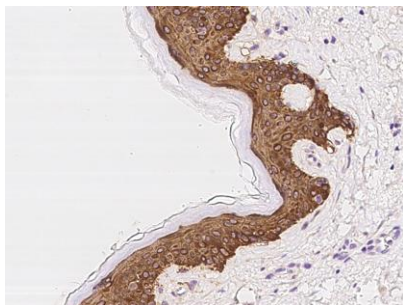
Please Note: Optimal concentrations/dilutions should be determined by the end user.

14-3-3 sigma Antibody, Rabbit PAb, Antigen Affinity Purified

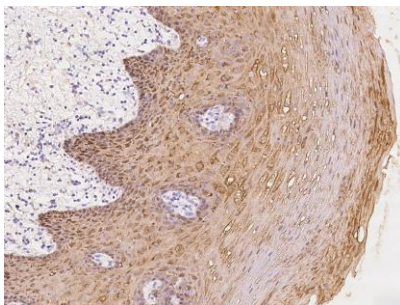


Sino Biological
Biological Solution Specialist

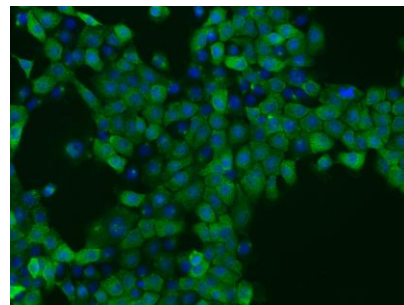
Catalog Number: 201443-T42



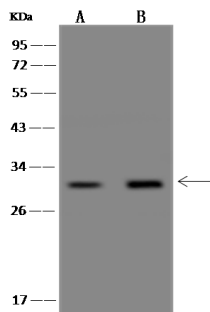
Immunohistochemical staining of human SFN in human skin with rabbit polyclonal antibody at 1:500 dilution, formalin-fixed paraffin embedded sections.



Immunohistochemical staining of human SFN in human esophagus with rabbit polyclonal antibody at 1:500 dilution, formalin-fixed paraffin embedded sections.



Immunofluorescence staining of SFN in A431 cells. Cells were fixed with 4% PFA, permeabilized with 0.1% Triton X-100 in PBS, blocked with 10% serum, and incubated with rabbit anti-Human SFN polyclonal antibody (dilution ratio 1:200) at 4°C overnight. Then cells were stained with the Alexa Fluor®488-conjugated Goat Anti-rabbit IgG secondary antibody (green) and counterstained with DAPI (blue). Positive staining was localized to Cytoplasm.



Anti-SFN rabbit polyclonal antibody at 1:500 dilution

Lane A: HeLa Whole Cell Lysate

Lane B: U-251 MG Whole Cell Lysate

Lysates/proteins at 30 µg per lane.

Secondary

Goat Anti-Rabbit IgG (H+L)/HRP at 1/10000 dilution.

Developed using the ECL technique.

Performed under reducing conditions.

Predicted band size: 27 kDa

Observed band size: 30 kDa

For Research Use Only. Not for use in diagnostic or therapeutic procedures.

Tel: +86-400-890-9989 (Global), +1-215-583-7898 (USA), +49(0)6196 9678656 (Europe)

Website: <http://www.sinobiological.com>