

# THOC1 Antibody, Rabbit PAb, Antigen Affinity Purified



Sino Biological  
Biological Solution Specialist

Catalog Number: 201461-T42

## GENERAL INFORMATION

<b>Immunogen:</b>	E. coli-derived Human THOC1 fragment
<b>Preparation</b>	Produced in rabbits immunized with E. coli-derived Human THOC1 fragment, and purified by antigen affinity chromatography.
<b>Ig Type:</b>	Rabbit IgG
<b>Specificity:</b>	Human THOC1
<b>Formulation:</b>	PBS, pH7.0 with 0.03% Proclin300
<b>Storage:</b>	This antibody can be stored at 2°C-8°C for one month without detectable loss of activity. Antibody products are stable for twelve months from date of receipt when stored at -20°C to -80°C. Avoid repeated freeze-thaw cycles.
<b>Alternative Names:</b>	THOC1

## APPLICATIONS

<b>Applications:</b>	WB, IHC-P, ICC/IF
----------------------	-------------------

## RECOMMENDED CONCENTRATION

<b>IHC-P</b>	IHC-P: 1:300-1:2000
<b>ICC/IF</b>	ICC/IF: 1:100-1:500
<b>Western Blot</b>	WB: 1:500-1:2000

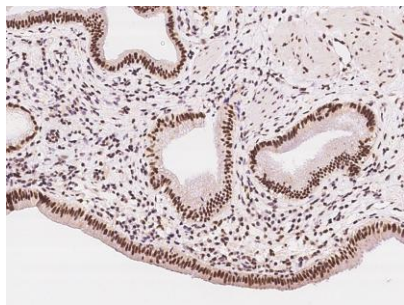
*Please Note: Optimal concentrations/dilutions should be determined by the end user.*

# THOC1 Antibody, Rabbit PAb, Antigen Affinity Purified

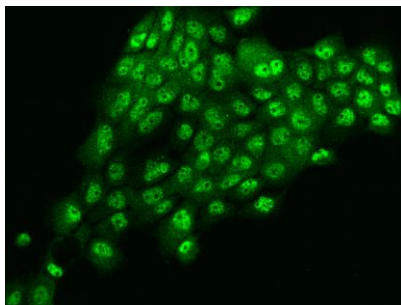
Catalog Number: 201461-T42



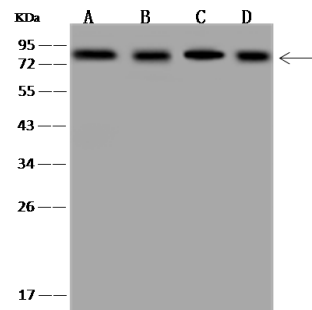
Sino Biological  
Biological Solution Specialist



Immunohistochemical staining of human THOC1 in human gallbladder with rabbit polyclonal antibody at 1:500 dilution, formalin-fixed paraffin embedded sections.



Immunofluorescence staining of THOC1 in A431 cells. Cells were fixed with 4% PFA, permeabilized with 0.1% Triton X-100 in PBS, blocked with 10% serum, and incubated with rabbit anti-Human THOC1 polyclonal antibody (dilution ratio 1:200) at 4°C overnight. Then cells were stained with the Alexa Fluor®488-conjugated Goat Anti-rabbit IgG secondary antibody (green). Positive staining was localized to Nucleus and Cytoplasm.



Anti-THOC1 rabbit polyclonal antibody at 1:500 dilution

Lane A: Jurkat Whole Cell Lysate

Lane B: HeLa Whole Cell Lysate

Lane C: U-87 MG Whole Cell Lysate

Lane D: HepG2 Whole Cell Lysate

Lysates/proteins at 30 µg per lane.

Secondary

Goat Anti-Rabbit IgG (H+L)/HRP at 1/10000 dilution.

Developed using the ECL technique.

Performed under reducing conditions.

Predicted band size: 76 kDa

Observed band size: 76 kDa