

c-Fos Antibody, Rabbit PAb, Antigen Affinity Purified



Sino Biological
Biological Solution Specialist

Catalog Number: 201471-T34

GENERAL INFORMATION

Immunogen:	E. coli-derived Human c-Fos fragment
Preparation	Produced in rabbits immunized with E. coli-derived Human c-Fos fragment, and purified by antigen affinity chromatography.
Ig Type:	Rabbit IgG
Specificity:	Human c-Fos
Formulation:	PBS, pH7.0 with 0.03% Proclin300
Storage:	This antibody can be stored at 2°C-8°C for one month without detectable loss of activity. Antibody products are stable for twelve months from date of receipt when stored at -20°C to -80°C. Avoid repeated freeze-thaw cycles.
Alternative Names:	FOS

APPLICATIONS

Applications:	WB, ICC/IF
----------------------	------------

RECOMMENDED CONCENTRATION

ICC/IF	ICC/IF: 1:100-1:500
Western Blot	WB: 1:500-1:2000

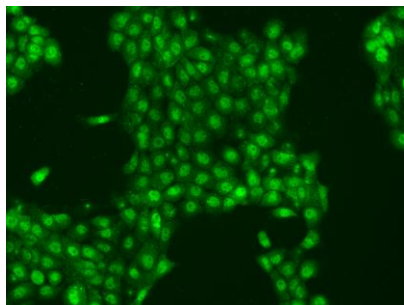
Please Note: Optimal concentrations/dilutions should be determined by the end user.

c-Fos Antibody, Rabbit PAb, Antigen Affinity Purified

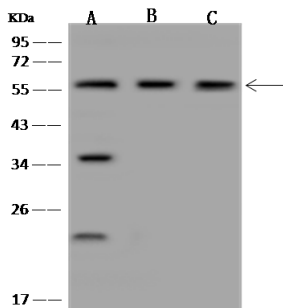
Catalog Number: 201471-T34



Sino Biological
Biological Solution Specialist



Immunofluorescence staining of FOS in A431 cells. Cells were fixed with 4% PFA, permeabilized with 0.1% Triton X-100 in PBS, blocked with 10% serum, and incubated with rabbit anti-Human FOS polyclonal antibody (dilution ratio 1:200) at 4°C overnight. Then cells were stained with the Alexa Fluor®488-conjugated Goat Anti-rabbit IgG secondary antibody (green). Positive staining was localized to Nucleus and Cytoplasm.



Anti-c-Fos rabbit polyclonal antibody at 1:500 dilution

Lane A: HeLa Whole Cell Lysate

Lane B: HepG2 Whole Cell Lysate

Lane C: SH-SY5Y Whole Cell Lysate

Lysates/proteins at 30 µg per lane.

Secondary

Goat Anti-Rabbit IgG (H+L)/HRP at 1/10000 dilution.

Developed using the ECL technique.

Performed under reducing conditions.

Predicted band size: 41 kDa

Observed band size: 57 kDa

(We are unsure as to the identity of these extra bands.)

For Research Use Only. Not for use in diagnostic or therapeutic procedures.

Tel: +86-400-890-9989 (Global), +1-215-583-7898 (USA), +49(0)6196 9678656 (Europe)

Website: <http://www.sinobiological.com>